

1.35E+10 4.17E+08 ##### 24.230.59.68
1.35E+10 4.17E+08 ##### 24.230.59.68
1.35E+10 4.17E+08 ##### 24.230.59.68
1.35E+10 4.17E+08 ##### 24.230.59.68
1.35E+10 4.17E+08 ##### 24.230.59.68
1.35E+10 4.17E+08 ##### 24.230.59.68
1.35E+10 4.17E+08 ##### 24.230.59.68
1.34E+10 4.14E+08 04/01/2022 8:28 ##### 24.230.178.74
1.34E+10 4.14E+08 ##### 172.58.84.154
1.34E+10 4.14E+08 ##### 24.230.178.74
1.34E+10 4.14E+08 ##### 35.226.4.106
1.34E+10 4.14E+08 ##### 24.230.178.74
1.34E+10 4.14E+08 ##### 24.230.178.74
1.34E+10 4.14E+08 ##### 74.8.249.230
1.34E+10 4.14E+08 03/27/2022 3:28 ##### 35.194.59.149
1.34E+10 4.14E+08 ##### 24.111.44.134
1.34E+10 4.14E+08 ##### 34.134.64.159
1.34E+10 4.14E+08 03/25/2022 9:14 ##### 206.80.128.70
1.34E+10 4.14E+08 ##### 70.59.94.35
1.34E+10 4.14E+08 ##### 172.58.84.111
1.34E+10 4.14E+08 03/23/2022 3:18 ##### 199.244.223.2
1.34E+10 4.14E+08 ##### 174.199.44.248
1.34E+10 4.14E+08 ##### 35.239.58.221
1.34E+10 4.14E+08 03/22/2022 9:09 ##### 24.230.178.74
1.34E+10 4.14E+08 03/22/2022 8:54 ##### 24.230.178.18
1.34E+10 4.14E+08 ##### 162.96.9.60
1.34E+10 4.14E+08 ##### 162.96.9.60
1.34E+10 4.14E+08 ##### 24.230.178.74
1.34E+10 4.14E+08 ##### 24.230.178.74
1.34E+10 4.14E+08 ##### 35.239.58.221
1.34E+10 4.14E+08 ##### 162.96.9.60
1.34E+10 4.14E+08 ##### 35.239.58.221
1.34E+10 4.14E+08 ##### 162.96.9.61
1.34E+10 4.14E+08 ##### 64.33.118.204
1.34E+10 4.14E+08 ##### 73.65.28.73
1.34E+10 4.14E+08 03/18/2022 4:17 ##### 162.96.9.61
1.34E+10 4.14E+08 ##### 24.230.84.17
1.34E+10 4.14E+08 03/17/2022 9:18 ##### 162.96.9.61
1.34E+10 4.14E+08 03/17/2022 6:55 ##### 35.194.59.149
1.34E+10 4.14E+08 03/17/2022 2:11 ##### 174.199.73.129
1.34E+10 4.14E+08 ##### 64.8.144.209
1.34E+10 4.14E+08 ##### 174.20.164.22
1.34E+10 4.14E+08 ##### 162.96.9.60
1.34E+10 4.14E+08 ##### 162.96.9.60
1.34E+10 4.14E+08 ##### 96.3.24.30
1.34E+10 4.14E+08 ##### 174.199.101.179
1.34E+10 4.14E+08 ##### 162.96.9.60
1.34E+10 4.14E+08 ##### 162.96.9.61

1.34E+10 4.14E+08 ##### ##### 162.96.9.60
1.34E+10 4.14E+08 03/15/2022 9:37 ##### 162.96.9.61
1.34E+10 4.14E+08 03/15/2022 8:45 ##### 162.96.9.61
1.34E+10 4.14E+08 03/15/2022 8:37 ##### 64.8.142.62
1.34E+10 4.14E+08 03/15/2022 8:26 ##### 162.96.9.61
1.34E+10 4.14E+08 03/15/2022 6:40 ##### 162.96.9.60
1.34E+10 4.14E+08 03/15/2022 1:14 ##### 162.96.9.60
1.34E+10 4.14E+08 ##### ##### 162.96.9.61
1.34E+10 4.14E+08 ##### ##### 162.96.9.60
1.34E+10 4.14E+08 ##### ##### 162.96.9.61
1.34E+10 4.14E+08 ##### ##### 96.2.104.184
1.34E+10 4.14E+08 ##### ##### 174.199.34.3
1.34E+10 4.14E+08 03/14/2022 9:45 ##### 162.96.9.60
1.34E+10 4.14E+08 03/14/2022 8:18 ##### 162.96.9.60
1.34E+10 4.14E+08 03/14/2022 6:38 ##### 71.89.73.107
1.34E+10 4.14E+08 ##### ##### 71.37.10.182
1.34E+10 4.14E+08 ##### ##### 174.20.105.221
1.34E+10 4.14E+08 ##### ##### 162.96.9.60
1.34E+10 4.14E+08 03/13/2022 9:34 ##### 162.96.9.61
1.34E+10 4.14E+08 03/13/2022 9:19 ##### 96.3.29.189
1.34E+10 4.14E+08 03/13/2022 8:56 ##### 162.96.9.61
1.34E+10 4.14E+08 ##### ##### 107.77.206.216
1.34E+10 4.14E+08 ##### ##### 162.96.9.61
1.34E+10 4.14E+08 ##### ##### 162.96.9.61
1.34E+10 4.14E+08 ##### ##### 162.96.9.61
1.34E+10 4.14E+08 ##### ##### 162.96.9.61
1.34E+10 4.14E+08 03/12/2022 8:23 ##### 35.222.137.41
1.34E+10 4.14E+08 03/12/2022 6:56 ##### 24.220.82.45
1.34E+10 4.14E+08 ##### ##### 154.6.21.14
1.34E+10 4.14E+08 ##### ##### 162.96.217.16
1.34E+10 4.14E+08 ##### ##### 162.96.9.60
1.34E+10 4.14E+08 ##### ##### 162.96.9.61
1.34E+10 4.14E+08 ##### ##### 162.96.9.61
1.34E+10 4.14E+08 03/11/2022 9:34 ##### 24.230.178.74
1.34E+10 4.14E+08 03/11/2022 8:53 ##### 162.96.9.60
1.34E+10 4.14E+08 03/11/2022 8:33 ##### 162.96.9.61
1.34E+10 4.14E+08 03/11/2022 8:04 ##### 172.58.83.204
1.34E+10 4.14E+08 03/11/2022 8:04 ##### 162.96.9.60
1.34E+10 4.14E+08 03/11/2022 8:03 ##### 162.96.9.61
1.34E+10 4.14E+08 03/11/2022 7:06 ##### 162.96.9.61
1.34E+10 4.14E+08 03/11/2022 5:15 ##### 96.3.85.161
1.34E+10 4.14E+08 03/11/2022 3:15 ##### 162.96.9.60
1.34E+10 4.14E+08 03/11/2022 0:27 ##### 162.96.9.61
1.34E+10 4.14E+08 ##### ##### 162.96.9.61
1.34E+10 4.14E+08 ##### ##### 162.96.9.61
1.34E+10 4.14E+08 ##### ##### 162.96.200.20
1.34E+10 4.14E+08 ##### ##### 162.96.9.61
1.34E+10 4.14E+08 ##### ##### 198.36.216.4

1.34E+10 4.14E+08 ##### 162.96.9.60
1.34E+10 4.14E+08 ##### 162.96.9.60
1.34E+10 4.14E+08 ##### 162.96.9.60
1.34E+10 4.14E+08 ##### 162.96.217.16
1.34E+10 4.14E+08 ##### 162.96.9.61
1.34E+10 4.14E+08 ##### 162.96.9.61
1.34E+10 4.14E+08 ##### 162.96.9.61
1.34E+10 4.14E+08 ##### 24.230.61.110
1.34E+10 4.14E+08 ##### 162.96.9.61
1.34E+10 4.14E+08 ##### 174.199.35.137
1.34E+10 4.14E+08 ##### 162.96.9.60
1.34E+10 4.14E+08 ##### 208.127.191.223
1.34E+10 4.14E+08 ##### 208.127.190.218
1.34E+10 4.14E+08 ##### 162.96.9.61
1.34E+10 4.14E+08 ##### 162.96.9.61
1.34E+10 4.14E+08 ##### 162.96.9.61
1.34E+10 4.14E+08 ##### 65.73.182.95
1.34E+10 4.14E+08 ##### 162.96.9.61
1.34E+10 4.14E+08 ##### 162.96.9.60
1.34E+10 4.14E+08 ##### 162.96.9.60
1.34E+10 4.14E+08 ##### 162.96.9.61
1.34E+10 4.14E+08 ##### 162.96.9.60
1.34E+10 4.14E+08 ##### 162.96.9.61
1.34E+10 4.14E+08 ##### 162.96.9.61
1.34E+10 4.14E+08 ##### 24.230.84.47
1.34E+10 4.14E+08 ##### 35.226.4.106
1.34E+10 4.14E+08 ##### 162.96.9.60
1.34E+10 4.14E+08 ##### 174.199.37.0
1.34E+10 4.14E+08 ##### 162.96.9.61
1.34E+10 4.14E+08 ##### 34.134.64.159
1.34E+10 4.14E+08 ##### 35.194.59.149
1.34E+10 4.14E+08 ##### 34.72.209.203
1.34E+10 4.14E+08 ##### 35.239.58.221
1.34E+10 4.14E+08 ##### 35.194.59.149
1.34E+10 4.14E+08 ##### 34.72.209.203
1.34E+10 4.14E+08 ##### 34.72.209.203
1.34E+10 4.14E+08 ##### 35.194.59.149
1.34E+10 4.14E+08 ##### 34.72.209.203
1.34E+10 4.14E+08 ##### 35.194.59.149
1.34E+10 4.14E+08 ##### 35.194.59.149
1.34E+10 4.14E+08 ##### 35.194.59.149
1.34E+10 4.14E+08 ##### 162.96.9.61
1.34E+10 4.14E+08 ##### 35.194.59.149
1.34E+10 4.14E+08 ##### 35.194.59.149
1.34E+10 4.14E+08 ##### 162.96.9.61
1.34E+10 4.14E+08 ##### 162.96.9.61
1.34E+10 4.14E+08 ##### 162.96.9.60

1.33E+10 4.14E+08 02/14/2022 5:03 ##### 96.2.146.32
1.33E+10 4.14E+08 ##### ##### 96.2.106.220
1.33E+10 4.14E+08 ##### ##### 174.246.196.241
1.33E+10 4.14E+08 ##### ##### 97.116.170.188
1.33E+10 4.14E+08 ##### ##### 208.107.1.211
1.33E+10 4.14E+08 ##### ##### 65.128.168.26
1.33E+10 4.14E+08 ##### ##### 24.52.60.20
1.33E+10 4.14E+08 ##### ##### 65.128.191.192
1.33E+10 4.14E+08 ##### ##### 174.20.131.95
1.33E+10 4.14E+08 ##### ##### 204.209.51.26
1.33E+10 4.14E+08 ##### ##### 174.199.43.229
1.33E+10 4.14E+08 ##### ##### 174.20.179.74
1.33E+10 4.14E+08 02/13/2022 9:50 ##### 24.230.58.199
1.33E+10 4.14E+08 02/13/2022 8:09 ##### 96.3.87.69
1.33E+10 4.14E+08 02/13/2022 7:39 ##### 174.20.172.237
1.33E+10 4.14E+08 02/13/2022 7:05 ##### 24.52.61.53
1.33E+10 4.14E+08 02/13/2022 0:12 ##### 64.33.86.3
1.33E+10 4.14E+08 ##### ##### 208.107.23.219
1.33E+10 4.14E+08 ##### ##### 174.20.145.205
1.33E+10 4.14E+08 ##### ##### 70.59.87.129
1.33E+10 4.14E+08 ##### ##### 64.33.88.223
1.33E+10 4.14E+08 ##### ##### 97.127.94.213
1.33E+10 4.14E+08 ##### ##### 69.9.237.197
1.33E+10 4.14E+08 ##### ##### 45.7.236.70
1.33E+10 4.14E+08 ##### ##### 24.230.64.214
1.33E+10 4.14E+08 ##### ##### 174.199.34.192
1.33E+10 4.14E+08 ##### ##### 172.58.83.3
1.33E+10 4.14E+08 ##### ##### 24.220.83.140
1.33E+10 4.14E+08 ##### ##### 96.2.110.253
1.33E+10 4.14E+08 ##### ##### 172.58.86.140
1.33E+10 4.14E+08 ##### ##### 24.111.104.151
1.33E+10 4.14E+08 ##### ##### 208.107.22.96
1.33E+10 4.14E+08 ##### ##### 24.230.85.75
1.33E+10 4.14E+08 ##### ##### 71.37.3.66
1.33E+10 4.14E+08 ##### ##### 24.111.165.252
1.33E+10 4.14E+08 ##### ##### 24.230.64.99
1.33E+10 4.14E+08 ##### ##### 24.230.64.99
1.33E+10 4.14E+08 ##### ##### 96.2.108.157
1.33E+10 4.14E+08 ##### ##### 96.2.114.157
1.33E+10 4.14E+08 ##### ##### 65.128.129.186
1.33E+10 4.14E+08 ##### ##### 96.2.110.177
1.33E+10 4.14E+08 ##### ##### 45.234.233.54
1.33E+10 4.14E+08 ##### ##### 172.76.53.168
1.33E+10 4.14E+08 ##### ##### 66.188.152.186
1.33E+10 4.14E+08 ##### ##### 75.117.122.102
1.33E+10 4.14E+08 ##### ##### 98.97.2.116
1.33E+10 4.14E+08 ##### ##### 24.52.61.149
1.33E+10 4.14E+08 ##### ##### 173.225.158.234

1.33E+10 4.14E+08 ##### 174.199.46.116
1.33E+10 4.14E+08 ##### 96.3.28.75
1.33E+10 4.14E+08 ##### 208.107.245.121
1.33E+10 4.14E+08 ##### 96.2.115.82
1.33E+10 4.14E+08 ##### 24.111.164.233
1.33E+10 4.14E+08 ##### 174.131.18.84
1.33E+10 4.14E+08 ##### 174.199.69.76
1.33E+10 4.14E+08 ##### 208.107.22.115
1.33E+10 4.14E+08 ##### 208.107.214.96
1.33E+10 4.14E+08 ##### 107.77.210.157
1.33E+10 4.14E+08 ##### 75.168.143.240
1.33E+10 4.14E+08 ##### 174.20.181.114
1.33E+10 4.14E+08 ##### 174.199.73.0
1.33E+10 4.14E+08 ##### 174.20.122.92
1.33E+10 4.14E+08 ##### 24.56.168.114
1.33E+10 4.14E+08 ##### 174.20.217.104
1.33E+10 4.14E+08 ##### 174.20.2.112
1.33E+10 4.14E+08 ##### 24.230.60.253
1.33E+10 4.14E+08 ##### 96.2.113.42
1.33E+10 4.14E+08 ##### 208.107.0.41
1.33E+10 4.14E+08 ##### 174.20.122.92
1.33E+10 4.14E+08 02/12/2022 9:56 ##### 208.107.243.170
1.33E+10 4.14E+08 02/12/2022 9:54 ##### 67.45.96.86
1.33E+10 4.14E+08 02/12/2022 9:52 ##### 75.168.209.246
1.33E+10 4.14E+08 02/12/2022 9:52 ##### 72.41.0.221
1.33E+10 4.14E+08 02/12/2022 9:46 ##### 75.89.244.159
1.33E+10 4.14E+08 02/12/2022 9:41 ##### 208.107.22.196
1.33E+10 4.14E+08 02/12/2022 9:35 ##### 174.211.164.120
1.33E+10 4.14E+08 02/12/2022 9:37 ##### 24.230.61.95
1.33E+10 4.14E+08 02/12/2022 9:29 ##### 172.58.84.173
1.33E+10 4.14E+08 02/12/2022 9:13 ##### 174.20.101.165
1.33E+10 4.14E+08 02/12/2022 9:11 ##### 173.21.168.14
1.33E+10 4.14E+08 02/12/2022 9:03 ##### 174.20.133.162
1.33E+10 4.14E+08 02/12/2022 8:56 ##### 174.199.44.235
1.33E+10 4.14E+08 02/12/2022 8:56 ##### 139.55.50.100
1.33E+10 4.14E+08 02/12/2022 8:55 ##### 172.76.39.68
1.33E+10 4.14E+08 02/12/2022 8:45 ##### 174.199.84.42
1.33E+10 4.14E+08 02/12/2022 8:29 ##### 174.20.180.25
1.33E+10 4.14E+08 02/12/2022 8:44 ##### 172.58.83.39
1.33E+10 4.14E+08 02/12/2022 8:38 ##### 96.3.2.50
1.33E+10 4.14E+08 02/12/2022 8:36 ##### 174.20.183.15
1.33E+10 4.14E+08 02/12/2022 8:35 ##### 174.131.16.20
1.33E+10 4.14E+08 02/12/2022 8:28 ##### 174.20.160.194
1.33E+10 4.14E+08 02/12/2022 8:25 ##### 107.77.210.130
1.33E+10 4.14E+08 02/12/2022 8:14 ##### 96.2.112.118
1.33E+10 4.14E+08 02/12/2022 8:06 ##### 174.211.110.210
1.33E+10 4.14E+08 02/12/2022 8:01 ##### 172.58.83.91
1.33E+10 4.14E+08 02/12/2022 8:01 ##### 75.117.124.64

1.33E+10	4.14E+08	02/12/2022 7:59	#####	172.76.39.76
1.33E+10	4.14E+08	02/12/2022 7:51	#####	174.199.76.40
1.33E+10	4.14E+08	02/11/2022 9:29	#####	65.140.194.46
1.33E+10	4.14E+08	02/10/2022 7:38	#####	75.168.219.133
1.33E+10	4.15E+08	#####	#####	24.230.59.68
1.33E+10	4.14E+08	02/09/2022 8:40	#####	156.99.127.65
1.33E+10	4.14E+08	#####	#####	107.77.209.52
1.33E+10	4.14E+08	#####	#####	174.199.98.229
1.33E+10	4.14E+08	#####	#####	24.230.116.82
1.33E+10	4.14E+08	#####	#####	24.230.84.120
1.33E+10	4.14E+08	02/06/2022 8:07	#####	107.77.210.161
1.33E+10	4.14E+08	#####	#####	67.143.192.203
1.33E+10	4.14E+08	#####	#####	208.107.214.121
1.33E+10	4.14E+08	#####	#####	174.199.42.249
1.33E+10	4.14E+08	02/04/2022 6:24	#####	65.73.23.50
1.33E+10	4.14E+08	#####	#####	208.107.215.117
1.33E+10	4.14E+08	#####	#####	96.3.84.133
1.33E+10	4.14E+08	#####	#####	75.168.198.100
1.33E+10	4.14E+08	#####	#####	24.220.171.101
1.33E+10	4.14E+08	#####	#####	24.230.59.47
1.33E+10	4.14E+08	#####	#####	74.8.249.230
1.33E+10	4.14E+08	#####	#####	174.20.114.242
1.33E+10	4.14E+08	#####	#####	174.20.100.174
1.33E+10	4.14E+08	#####	#####	172.58.83.60
1.33E+10	4.14E+08	#####	#####	107.77.210.22
1.33E+10	4.14E+08	#####	#####	165.225.61.48
1.33E+10	4.14E+08	#####	#####	172.58.86.155
1.33E+10	4.14E+08	#####	#####	69.30.179.56
1.33E+10	4.14E+08	02/03/2022 6:08	#####	64.83.205.110
1.33E+10	4.14E+08	02/03/2022 9:41	#####	24.230.178.74
1.33E+10	4.14E+08	02/03/2022 7:59	#####	24.230.61.122
1.33E+10	4.14E+08	02/03/2022 7:01	#####	181.215.127.251
1.33E+10	4.14E+08	02/03/2022 5:10	#####	75.117.125.170
1.33E+10	4.14E+08	02/03/2022 3:35	#####	107.127.42.140
1.33E+10	4.14E+08	#####	#####	24.230.85.47
1.33E+10	4.14E+08	#####	#####	75.168.207.100
1.33E+10	4.14E+08	#####	#####	96.3.2.66
1.33E+10	4.14E+08	#####	#####	24.111.165.220
1.33E+10	4.14E+08	#####	#####	172.58.84.34
1.33E+10	4.14E+08	#####	#####	97.127.22.117
1.33E+10	4.14E+08	#####	#####	65.128.233.28
1.33E+10	4.14E+08	#####	#####	129.222.8.245
1.33E+10	4.14E+08	#####	#####	96.2.145.251
1.33E+10	4.14E+08	#####	#####	75.168.51.78
1.33E+10	4.14E+08	#####	#####	174.199.73.165
1.33E+10	4.14E+08	#####	#####	174.20.181.124
1.33E+10	4.14E+08	#####	#####	174.20.114.138
1.33E+10	4.14E+08	#####	#####	174.20.183.151

1.33E+10	4.14E+08	#####	#####	172.58.86.233
1.33E+10	4.14E+08	#####	#####	172.58.137.112
1.33E+10	4.14E+08	#####	#####	24.230.65.243
1.33E+10	4.14E+08	#####	#####	174.193.203.244
1.33E+10	4.14E+08	#####	#####	174.20.175.132
1.33E+10	4.14E+08	#####	#####	174.199.47.101
1.33E+10	4.14E+08	#####	#####	69.30.176.196
1.33E+10	4.14E+08	#####	#####	75.117.126.244
1.33E+10	4.14E+08	#####	#####	64.8.142.62
1.33E+10	4.14E+08	#####	#####	208.107.214.121
1.33E+10	4.14E+08	#####	#####	24.111.165.167
1.33E+10	4.14E+08	#####	#####	173.8.102.157
1.33E+10	4.14E+08	#####	#####	174.199.73.67
1.33E+10	4.14E+08	#####	#####	67.4.136.160
1.33E+10	4.14E+08	#####	#####	65.128.37.248
1.33E+10	4.14E+08	#####	#####	64.8.142.60
1.33E+10	4.14E+08	#####	#####	24.236.62.30
1.32E+10	4.14E+08	01/03/2022 8:28	#####	199.17.206.129
1.32E+10	4.14E+08	12/31/2021 9:48	#####	96.2.104.18
1.32E+10	4.14E+08	#####	#####	24.230.178.74

What is your favorite part of Princeton, Minnesota? (Select all that apply)

Restaurant:School Dist	Retail Shop	Parks and R	Healthcare	Community	Employer	Housing	Neighborhc
				Community	Employment		
Restaurants		Parks and Recreation					
Restaurants						Housing	Neighborhc
		Parks and Recreation					Neighborhc
	School District					Housing	Neighborhc
Restaurants	Retail Shopping			Community			
Restaurant:School District							
Restaurants		Parks and Recreation		Community	Employment		Neighborhc
					Employment		
				Community			
Restaurants	Retail Shop	Parks and Recreation					Neighborhc
					Employer	Housing	Neighborhc
						Housing	Neighborhc
Restaurants		Parks and Recreation		Community		Housing	Neighborhc
Restaurants		Parks and Recreation				Housing	
				Community			
Restaurants		Parks and Recreation					
Restaurant:School District				Community			
						Housing	Neighborhc
	School District			Community			
Restaurant:School Dist	Retail Shopping						
Restaurants							Neighborhc
				Community			Neighborhc
				Community			Neighborhc
	School District	Parks and Recreation		Community			Neighborhc
Restaurants	Retail Shopping			Community			
	Retail Shopping			Community			
	Retail Shopping			Community		Housing	
Restaurants	Retail Shopping					Housing	Neighborhc
Restaurants						Housing	
Restaurants		Parks and Recreation		Community			
Restaurants				Community			Neighborhc
Restaurant:School Dist	Retail Shop	Parks and R	Healthcare	Community	Employer	Housing	Neighborhc
Restaurants				Community			Neighborhc
				Community			
							Neighborhc
Restaurants		Parks and Recreation		Community			
Restaurants							
Restaurants		Parks and Recreation					
Restaurants	Retail Shop	Parks and Recreation		Community			Neighborhc
		Parks and Recreation					Neighborhc
	School District				Employment		

Restaurants		Community	Employer Housing	Neighborhood
	Parks and Recreation			
	Parks and Recreation			
	Parks and Recreation			
Restaurant:School Dist Retail Shop	Parks and Recreation			
	Parks and Recreation	Community	Employment	Neighborhood
Restaurant:School Dist Retail Shop	Parks and R	Healthcare	Community	Employer Housing
			Community	Neighborhood
	School District			Housing
	School District	Parks and Recreation	Community	Neighborhood
Restaurants		Healthcare		
Restaurant:School District	Parks and Recreation	Community		
		Community		
	School District	Community		
Restaurants	Parks and R	Healthcare	Community	Employment
	School District		Community	Employer Housing
		Parks and R	Healthcare	
	Parks and Recreation	Community		
Restaurants		Community		Neighborhood
	Parks and Recreation	Community		
	Parks and Recreation	Community		Neighborhood
		Healthcare	Employment	
	Parks and Recreation		Employer Housing	
Restaurant:School Dist Retail Shopping		Community		Neighborhood
Restaurants	Retail Shopping	Community		
	School District			
		Community		
Restaurants	Parks and Recreation	Community		Neighborhood
Restaurants	Parks and R	Healthcare	Community	Employment
	Parks and R	Healthcare	Community	Neighborhood
	Parks and R	Healthcare	Community	Employment
Restaurants		Healthcare		
	School District	Parks and Recreation		Housing
				Neighborhood
Restaurant:School Dist Retail Shopping		Healthcare	Employment	
		Community		Neighborhood
Restaurants	Parks and R	Healthcare	Employment	
			Employment	
	School District	Parks and Recreation		
		Healthcare		
	Parks and Recreation	Community		
Restaurants		Community		
		Community	Employment	
		Community		
		Community		
	Retail Shopping			
		Healthcare	Community	

Restaurant: School District		Healthcare	Community			
				Employment		
		Healthcare				
		Parks and Recreation	Community			
Restaurants		Parks and Recreation	Community			
				Employment		
				Employment		
			Community			Neighborhood
		Healthcare		Employment		
Restaurants	Retail Shopping	Healthcare		Community		
		Healthcare				
Restaurants		Parks and R	Healthcare	Community	Employment	
				Community		
Restaurants		Healthcare		Employment		
	School District	Parks and R	Healthcare	Community	Employer	Housing
Restaurants		Healthcare				Neighborhood
	School District			Community		
		Healthcare				
		Healthcare				
				Employment		Neighborhood
	School District			Community	Housing	Neighborhood
Restaurants						
	School District	Parks and Recreation	Community		Housing	
			Community			
	School District					
		Parks and Recreation			Housing	Neighborhood
Restaurants		Healthcare				
		Healthcare				
		Parks and R	Healthcare			
Restaurant: School Dist	Retail Shop	Parks and Recreation	Community	Employer	Housing	Neighborhood
				Employment		
		Parks and Recreation	Community			
Restaurant: School District				Community	Employment	
	School District					
Restaurants		Healthcare		Employment		
		Healthcare				
Restaurants		Healthcare		Employment		
				Community		
				Community		
					Employment	
		Healthcare				
Restaurants		Healthcare				
		Healthcare				

			Community Community	
		Parks and Recreation		
			Employment Employment	
Restaurants				
	School District	Parks and R Healthcare	Healthcare Community Employment Employment Employment Employment	Neighborhc
	School District	Parks and R Healthcare	Healthcare Employment Employment	
		Healthcare Healthcare	Community	Neighborhc
Restaurants			Community	Neighborhc
		Healthcare		
Restaurants			Community Community	
		Healthcare	Employment Employment	
Restaurants Restaurants		Parks and R Healthcare	Healthcare Community Community Community Community Community	
		Healthcare	Community	
Restaurant: School District		Healthcare	Employment	
		Healthcare	Community	
				Housing
Restaurants Restaurants		Parks and Recreation Healthcare Healthcare Healthcare		
			Community	
Restaurants		Healthcare		
			Employment	
		Healthcare		
			Community	
		Healthcare		

Healthcare

Employment

Restaurants

Parks and Recreation

Parks and Recreation

Neighborhood

Restaurants

Retail Shop

Parks and Recreation

Parks and Recreation

Restaurants

Parks and Recreation

Employment

Neighborhood

Restaurants

Parks and Recreation

Community

Restaurants

Retail Shop

Parks and Recreation

Parks and Recreation

Restaurants

Retail Shop

Parks and Recreation

Neighborhood

Restaurant: School District

Parks and Recreation

Community

School District

Parks and Recreation

Restaurants

Parks and Recreation

Community

School District

Community

Neighborhood

Neighborhood

Restaurants

Parks and Recreation

Healthcare

Community

Neighborhood

School District

Parks and Recreation

Employment

Restaurants

School District

Parks and Recreation

Community

Neighborhood

Parks and Recreation

Healthcare

Parks and Recreation

Healthcare

Community

Community

Community

Parks and Recreation

Restaurant: School District

Retail Shop

Parks and Recreation

Healthcare

Community

Neighborhood

School District

Retail Shop

Parks and Recreation

Community

School District

School District

Neighborhood

				Housing
	Retail Shopping			
Restaurant: School District	Parks and R	Healthcare	Community	
School District				
Restaurant: School District			Community	Neighborhood Neighborhood
		Healthcare		
				Housing Neighborhood
			Community	
Restaurants				
	Parks and Recreation			
				Neighborhood
			Community	
			Community	
Restaurants	Parks and Recreation			
			Community	
School District				
		Healthcare	Community	
School District			Community	Neighborhood
Restaurants			Community	
Restaurants			Community	Neighborhood
	Parks and Recreation			
	Parks and R	Healthcare		
Restaurant: School Dist	Retail Shopping		Community	Housing Neighborhood Neighborhood
Restaurants	Parks and Recreation			
School District			Community	Neighborhood Neighborhood
Restaurants				
School District		Healthcare		Neighborhood
				Housing
Restaurants				
Restaurants	Parks and Recreation			
	Parks and Recreation			
	Parks and Recreation			
	Parks and Recreation	Community		
School District				
	Parks and Recreation	Community		Neighborhood Neighborhood
Restaurants				
	Parks and Recreation			
School District				
			Community	
School District				
Restaurant: School District				

				Community		
		Parks and Recreation				Neighborhood Neighborhood
				Community		
	Retail Shopping				Housing	
Restaurants			Healthcare			Neighborhood
Restaurants	Retail Shopping					
Restaurants				Community	Housing	Neighborhood
				Community		
	Retail Shopping					
				Community	Housing	
	School District					
		Parks and Recreation				
Restaurant:	School District	Retail Shop	Parks and R	Healthcare	Community	Housing
				Healthcare	Community	Neighborhood Neighborhood
		Parks and Recreation				
	School District	Parks and Recreation		Community		
Restaurants				Community		Neighborhood
					Housing	
Restaurants		Retail Shop	Parks and R	Healthcare		Neighborhood
	School District					
						Neighborhood Neighborhood
	School District					
Restaurants		Retail Shop	Parks and Recreation			
	School District					
Restaurants						
	School District	Parks and R	Healthcare			Neighborhood
		Parks and Recreation				
	School District					
	School District					
				Healthcare		
	School District	Parks and Recreation				
				Community		
				Healthcare		
				Community		Neighborhood Neighborhood
		Parks and Recreation			Employment	
		Healthcare				
Restaurants	Retail Shop	Parks and R	Healthcare	Community		
						Neighborhood Neighborhood
		Parks and Recreation				
		Parks and Recreation				
		Parks and Recreation				

Restaurants
Restaurants
Parks and Recreation
Employment
Community
Community
Retail Shopping
Healthcare
Neighborhood
Neighborhood
Neighborhood

Restaurants
Parks and Recreation
Employment
School District
Parks and Recreation
Healthcare
Community
Community
Community
Housing

Restaurants
Restaurant: School District
Parks and Recreation
Community
Parks and Recreation
Restaurants
Parks and Recreation
Healthcare
Community
Housing
Restaurants
Retail Shopping
Healthcare
Housing
Neighborhood
School District
Community

Restaurant: School District
Retail Shop
Parks and Recreation
Community
School District
Community

Restaurant: School District
Parks and Recreation
Healthcare
Community
Community
Housing
Neighborhood
Restaurants
Retail Shopping
Community
Healthcare
Community
Employment
School District

Restaurants
Parks and Recreation
Parks and Recreation
Healthcare
Community

Parks and Recreation
Community
Housing
Neighborhood
Employment
Neighborhood
Neighborhood

Restaurant: School District
Parks and Recreation
Healthcare
Community
School District
Neighborhood
Neighborhood

Retail Shopping
School District
Healthcare
Community
Neighborhood
Restaurant: School District
Retail Shop
Parks and Recreation
Community

Neighborhood
Neighborhood
School District
Parks and Recreation
Healthcare
Employment
Employment

Neighborhood

Parks and Recreation
Parks and Recreation
Healthcare
Community
Community

Restaurants

Parks and Recreation
Healthcare
Community

School District

Restaurant: School District
Restaurants

Parks and Recreation
Healthcare
Community

Parks and Recreation
Retail Shopping
Community

Restaurants

Parks and Recreation
Community
Community

Restaurants

Community
Community
Community

Restaurants

Healthcare
Community
Community

Neighborhood

Restaurants

Parks and Recreation
Employment

000 I live within the the City of Princeton (non-townships) Retail, Restaurants and Housing
 I live within the the City of Princeton (non-townships) Retail, Restaurants and Services Industries
 I live within the the City of Princeton (non-townships) Housing Age Friendl
 I live within the Princeton ISD#477 School District Age Friendl
 I live within the Princet Tourism Retail, Restaurants and Housing
 000 I live within the the City of Princeton Manufacturing and Industrial Housing
 000 I am a visitor ManufactuRetail, Restaurants and Housing
 I live within the the Cit Tourism
 Distance fr I live within the Princeton ISD#477 School Dist Retail, Restaurants and Services Industries
 000 I live within the the Cit Tourism Retail, Restaurants and Services In Age Friendl
 I work for a Princeton area business Retail, Restaurants and Housing
 I live within the the City of PrincetManufactuRetail, Restaurants and Housing
 I live within the Princeton ISD#477 School DistRetail, Rest Transporta Housing
 I live within the Princeton ISD#477ManufactuRetail, Restaurants and Housing
 000 I work for a Princeton area business Retail, Restaurants and Housing Age Friendl
 000 I live within the Princeton ISD#477 School DistRetail, Restaurants and Services In Age Friendl
 I work for a Princeton area business Retail, Restaurants and Services Industries
 I live within the Princet Tourism Manufacturing and Industrial
 000 Other (plea I live outside of the city limits Retail, Restaurants and Services Industries
 I live within the the City of Princeton (non-tow Retail, Restaurants and Services Industries
 000 I live within the Princeton ISD#477 School DistRetail, Restaurants and Housing Age Friendl
 How much Other (plea I am a cool kid from Austin đŸ~Ž Housing
 I work for a Princeton area business Retail, Restaurants and Services Industries
 I live within the the City of PrincetManufactuRetail, Restaurants and Services Industries
 000 I work for a Princeton Tourism ManufactuRetail, Restaurants and Services Industries
 I work for a Princeton area businesManufactuRetail, Restaurants and Housing
 I live within the Princeton ISD#477ManufactuRetail, Restaurants and Housing
 I live within the Princet Tourism ManufactuRetail, Restaurants and Services Industries
 000 I work for a Princeton area business Retail, Restaurants and Housing
 I work for a Princeton Tourism Housing
 000 Other (plea township Retail, Restaurants and Services Industries
 000 I work for a Princeton area business Transportation Age Friendl
 I work for a Princeton Tourism Retail, Restaurants and Housing
 000 I live within the the City of Princeton (non-towRetail, Restaurants and Services In Age Friendl
 000 Other (plea Grew up there Retail, Restaurants and Services Industries
 I work for a Princeton area businesManufactuRetail, Restaurants and Housing
 000 I live within the Princeton ISD#477 School DistRetail, Restaurants and Housing
 I work for a Princeton area businesManufacturing and Ind Transportation Age Friendl
 I work for a Princeton area business Retail, Restaurants and Services Industries
 I live within the Princet Tourism Retail, Restaurants and Services Industries
 I live within the Princeton ISD#477 School Dist Retail, Restaurants and Services Industries
 I live within the Princeton ISD#477 School DistRetail, Restaurants and Housing
 I live within the Princeton ISD#477 School DistRetail, Rest Transportation
 I work for a Princeton area business Retail, Restaurants and Services Industries
 I live within the Princet Tourism Retail, Restaurants and Services In Age Friendl
 I live within the Princeton ISD#477ManufactuRetail, Restaurants and Services Industries
 I work for a Princeton area business Retail, Restaurants and Services Industries
 I live within the Princet Tourism Retail, Restaurants and Services In Age Friendl
 I live within the Princeton ISD#477ManufactuRetail, Restaurants and Services Industries
 I work for a Princeton area business Retail, Restaurants and Services Industries
 I live within the Princeton ISD#477 Manufacturing and Industrial Housing

	I work for a Princeton area business	Retail, Restaurants and Housing
	I live within the Princeton ISD#477 School Dist	Retail, Rest Transportation
	I work for a Princeton area business	Retail, Restaurants and Services Industries
	I live within the Princet Tourism	Manufactu Retail, Restaurants and Services Industries
	I live within the Princet Tourism	
	I work for a Princeton ε Tourism	Housing
	I work for a Princeton area business	Transportation
	I work for a Princeton area business	Manufactu Retail, Restaurants and Services Industries
cod	I work for a Princeton area business	Manufacturing and Industrial Age Friendl
	I live within the Princeton ISD#477 School Dist	Retail, Restaurants and Services In Age Friendl
	Other (plea Business Owner	Retail, Rest Transportation
	I work for a Princeton area business	Manufactu Retail, Restaurants and Services In Age Friendl
	I work for a Princeton area business	Retail, Restaurants and Services Industries
	I live within the Princet Tourism	Retail, Restaurants and Services Industries
	I work for a Princeton area business	Age Friendl
	I work for a Princeton area business	Retail, Restaurants and Services Industries
cod	I live within the Princeton ISD#477 School Dist	Retail, Restaurants and Services Industries
	I work for a Princeton area business	Manufactu Retail, Restaurants and Services Industries
	I live within the the Cit Tourism	Transporta Housing
Nothing	I live within the the City of Princet	Manufactu Retail, Rest Transportation
	I live within the Princeton ISD#477 School Dist	Retail, Restaurants and Services Industries
	I work for a Princeton area business	Retail, Restaurants and Services Industries
cod	I live within the the City of Princeton (non-tow	Retail, Restaurants and Services Industries
cod	I live within the Princeton ISD#477	Manufactu Retail, Rest Transportation
	I live within the the City of Princeton (non-tow	Retail, Restaurants and Housing Age Friendl
	I live within the Princeton ISD#477	Manufactu Retail, Restaurants and Services In Age Friendl
	I live within the the City of Princeton (non-tow	Retail, Rest Transportation Age Friendl
	I live within the Princeton ISD#477	Manufactu Retail, Restaurants and Housing
cod	I live within the the Cit Tourism	Manufacturing and Industrial
	I work for a Princeton area business	Retail, Restaurants and Services Industries
	I live within the the City of Princeton (non-tow	Retail, Restaurants and Services Industries
	I work for a Princeton area business	Retail, Restaurants and Services Industries
	I work for a Princeton area business	Age Friendl
cod	I live within the the City of Princet	Manufactu Retail, Restaurants and Services Industries
	I work for a Princeton area business	Retail, Restaurants and Services Industries
	I live within the Princet Tourism	Retail, Restaurants and Services Industries
	I am a visitor	Retail, Restaurants and Services Industries
	I live within the the Cit Tourism	Retail, Restaurants and Services In Age Friendl
	I work for a Princeton area business	Retail, Restaurants and Services Industries
	Other (plea Resident of Zimmerman/Livonia	Retail, Restaurants and Services Industries
	I work for a Princeton area business	Manufactu Retail, Rest Transportation
	I work for a Princeton area business	Retail, Restaurants and Services Industries
	I work for a Princeton ε Tourism	
	I work for a Princeton area business	Retail, Restaurants and Services Industries
Nature	I live within the Princeton ISD#477 School Dist	Retail, Restaurants and Housing Age Friendl
	I work for a Princeton area business	Retail, Restaurants and Services In Age Friendl
Nothing	Other (plea live in school district ar	Manufactu Retail, Restaurants and Services Industries
	I work for a Princeton area business	Retail, Restaurants and Services In Age Friendl

	I live within the Princeton ISD#477 School Dist	Retail, Restaurants and Services Industries
	I live within the Princeton ISD#477 School Dist	Retail, Restaurants and Services Industries
	I live within the the City of Princeton (non-townships)	Transportation Age Friendl
	I work for a Princeton ε Tourism	Retail, Restaurants and Services Industries
	I work for a Princeton area business	Age Friendl
	I work for a Princeton ε Tourism	Retail, Restaurants anc Housing
	I work for a Princeton area business	Retail, Restaurants and Services Industries
cod	I live within the Princeton ISD#477 School Dist	Retail, Restaurants and Services In Age Friendl
	I work for a Princeton area business	Retail, Restaurants anc Housing Age Friendl
	I live within the Princeton ISD#477 School Dist	Retail, Restaurants and Services Industries
	I live within the the City of Princet(Manufactu	Retail, Restaurants and Services Industries
	I live within the Princeton ISD#477 School Dist	Retail, Restaurants and Services Industries
	I live within the Princeton ISD#477Manufactu	Retail, Restaurants and Services In Age Friendl
	I work for a Princeton area business	Retail, Restaurants and Services Industries
	I work for a Princeton area business	Retail, Restaurants and Services In Age Friendl
	I work for a Princeton area business	Retail, Restaurants and Services Industries
	I work for a Princeton area business	Retail, Rest Transporta Housing
cod	I live within the Princeton ISD#477 School Dist	Retail, Rest Transporta Housing
	I live within the the Cit Tourism Manufactu	Retail, Restaurants and Services Industries
	I live within the Princeton ISD#477 School Dist	Retail, Restaurants and Services Industries
cod	I live within the Princeton ISD#477 School Dist	Retail, Restaurants and Services Industries
	I work for a Princeton area business	Retail, Restaurants and Services Industries
	I work for a Princeton area business	Retail, Restaurants and Services Industries
	I work for a Princeton area business	Retail, Restaurants and Services Industries
	Other (pleaWork in princeton and live within	Retail, Rest Transporta Housing
	I work for a Princeton area business	Retail, Restaurants and Services Industries
	I work for a Princeton area business	Housing Age Friendl
	I work for a Princeton area business	Retail, Restaurants and Services Industries
	I live within the the City of Princeton (non-tow	Retail, Restaurants and Services Industries
	I work for a Princeton ε Tourism	Retail, Restaurants anc Housing
	I work for a Princeton area businesManufactu	Retail, Restaurants and Services Industries
	I work for a Princeton area business	Retail, Rest Transportation Age Friendl
	I live within the Princet Tourism Manufactu	Retail, Restaurants and Services Industries
	I work for a Princeton ε Tourism Manufactu	Retail, Restaurants and Services Industries
Aldis and Ci	I am a visitor Tourism Manufactu	Retail, Restaurants and Services Industries
	I work for a Princeton area business	Retail, Restaurants and Services Industries
	I live within the the City of Princet(Manufactu	Retail, Restaurants and Services Industries
	I work for a Princeton area business	Housing
	I work for a Princeton area business	Retail, Restaurants and Services In Age Friendl
	I live within the Princeton ISD#477Manufactu	Retail, Restaurants anc Housing
	I work for a Princeton area business	Retail, Restaurants and Services Industries
	I work for a Princeton area business	Retail, Restaurants and Services Industries
none	I work for a Princeton area business	Retail, Restaurants and Services Industries
	I work for a Princeton area business	Retail, Restaurants and Services Industries
	I work for a Princeton ε Tourism	Retail, Restaurants and Services In Age Friendl
	I work for a Princeton area business	Retail, Restaurants and Services Industries
	I live within the Princeton ISD#477 School Dist	Retail, Restaurants and Services In Age Friendl
	I work for a Princeton ε Tourism	Retail, Restaurants and Services Industries

	I work for a Princeton area business		Housing	Age Friendl
Airport.	I live within the Princeton ISD#477 School District		Transportation	
Airport.	I live within the Princeton ISD#477 School District		Transportation	
Nothing list	Other (plea	Nothing list	Tourism	Age Friendl
Airport.	I am a visitor			Age Friendl
Airport.	I am a visitor	Manufacturing and Industrial		Age Friendl
Airport.	I am a visitor		Transportation	
	I live within the the Cit	Tourism		Age Friendl
Airport.	I live within the the City of Princeton (non-townships)		Transportation	
Airport.	I am a visitor		Transportation	
Airport.	I live within the the City of Princeton (non-townships)		Transportation	
Airport.	I am a visitor		Transportation	
Airport.	I am a visitor		Transportation	
Airport	I am a visitor		Transportation	
Airport	I live within the Princeton ISD#477 School District		Transportation	
Airport	I live within the Princeton ISD#477 School District		Transportation	
Airport	I live within the Princet	Tourism	Retail, Restaurants and Services Industries	
Airport	I live within the Princeton ISD#477	Manufactu	Retail, Restaurants and Services Industries	
Airport	I work for a Princeton area busines	Manufacturing and Industrial		Age Friendl
	I am a visitor		Retail, Restaurants and Services Industries	
	I live within the Princeton ISD#477 School Dist	Retail, Restaurants and Services	In	Age Friendl
cod	I live within the the City of Princeton (non-tow	Retail, Restaurants and Services	In	Age Friendl
	I live within the Princet	Tourism		
	I live within the the Cit	Tourism	Manufactu	Retail, Restaurants and Services Industries
family	I live within the Princet	Tourism		Age Friendl
	I live within the Princet	Tourism	Housing	Age Friendl
	I live within the Princet	Tourism	Retail, Restaurants and Services	In
NOT, I repe	I live within the the City of Princet	Manufactu	Retail, Restaurants and Services Industries	
	I live within the Princet	Tourism	Manufactu	Retail, Restaurants and Services Industries
	I live within the Princeton ISD#477 School Dist	Retail, Restaurants and Services	In	Age Friendl
	I live within the Princet	Tourism	Transportation	
	I live within the Princeton ISD#477 School Dist	Retail, Restaurants and Services	Industries	
cod	I live within the Princeton ISD#477 School District			
cod	I live within the Princet	Tourism	Manufacturing and Industrial	Age Friendl
There are gl	I live within the Princeton ISD#477	Manufactu	Retail, Restaurants and Services Industries	
	I work for a Princeton area busines	Manufacturing and Industrial		
cod	I live within the the City of Princet	Manufactu	Retail, Restaurants and Services Industries	
	I work for a Princeton	Tourism	Retail, Restaurants and Services	In
cod	I live within the the City of Princet	Manufactu	Retail, Restaurants and Services Industries	
	I live within the Princet	Tourism	Housing	Age Friendl
Christ Our	Other (plea	Husband w	Tourism	Manufactu
	I am a visitor			Retail, Restaurants and Services Industries
	I live within the the Cit	Tourism		
	I live within the the City of Princeton (non-tow	Retail, Rest	Transporta	Housing
cod	I live within the Princet	Tourism	Manufactu	Retail, Restaurants and Services Industries
	I live within the Princet	Tourism	Retail, Restaurants and Services	Industries
	I live within the the City of Princeton (non-tow	Retail, Restaurants anc	Housing	Age Friendl
cod	I live within the Princet	Tourism	Retail, Restaurants and Services	Industries

I live within the the City of Princeton (non-tow Retail, Restaurants anc Housing Age Friendl
I am a visitor Tourism

I live within the the City of Princeton (non-townships) Housing Age Friendl

I live within the Princeton ISD#477 School Dist Retail, Restaurants and Services Industries

cod I live within the the Cit Tourism Retail, Restaurants anc Housing

cod I live within the the City of Princet Manufacturing and Industrial

I live within the the City of Princeton (non-tow Retail, Restaurants and Services Industries

cod I live within the Princeton ISD#477 School Dist Retail, Restaurants and Services Industries
Scenery and I live within the Princet Tourism

I live within the Princeton ISD#477 School Dist Retail, Restaurants and Services Industries

I live within the the City of Princet Manufacturing and Industrial Retail, Restaurants and Services Industries

Small town Other (plea I was born here. Retail, Restaurants and Services Industries

cod I live within the Princeton ISD#477 Manufacturing Retail, Restaurants and Services In Age Friendl

I live within the the City of Princet Manufacturing Retail, Restaurants and Services In Age Friendl

I live within the Princeton ISD#477 School Dist Retail, Restaurants and Services Industries

Other (plea Frequently Tourism Retail, Restaurants and Services Industries

I live within the Princeton ISD#477 School Dist Retail, Restaurants and Services In Age Friendl

I live within the the City of Princeton (non-tow Retail, Restaurants anc Housing

I live within the Princet Tourism Age Friendl

cod I live within the Princeton ISD#477 Manufacturing Retail, Restaurants anc Housing

I live within the the City of Princeton (non-tow Retail, Rest Transporta Housing

cod I live within the Princeton ISD#477 School Dist Retail, Restaurants and Services Industries

I live within the Princeton ISD#477 School District Transportation

Lifestyle Tir I work for a Princeton area busines Manufacturing and Industrial

cod I live within the Princeton ISD#477 School Dist Retail, Restaurants anc Housing

cod I live within the Princeton ISD#477 School District Age Friendl

I live within the Princeton ISD#477 Manufacturing Retail, Restaurants anc Housing

cod I live within the the City of Princeton (non-tow Retail, Restaurants anc Housing

cod I live within the the City of Princeton (non-tow Retail, Restaurants and Services In Age Friendl

I live within the Princeton ISD#477 School Dist Retail, Restaurants anc Housing

I live within the the City of Princeton (non-townships) Housing Age Friendl

cod I live within the the Cit Tourism Retail, Restaurants and Services In Age Friendl

I live within the Princeton ISD#477 School District Housing

I work for a Princeton Tourism Retail, Restaurants and Services Industries

I live within the the Cit Tourism Retail, Rest Transportation

I live within the Princet Tourism Retail, Restaurants and Services Industries

I live within the Princet Tourism Retail, Restaurants and Services Industries

I live within the the City of Princet Manufacturing Retail, Restaurants and Services Industries

I live within the the City of Princet Manufacturing Retail, Restaurants and Services In Age Friendl

cod I live within the the City of Princeton (non-tow Retail, Restaurants and Services Industries

cod I live within the the City of Princeton (non-townships) Age Friendl

Lifestyle Tir I live within the the City of Princeton (non-tow Retail, Restaurants and Services Industries

I am a visitor Tourism

I live within the the Cit Tourism

I live within the Princeton ISD#477 School Dist Retail, Restaurants and Services Industries

I work for a Princeton Tourism

Family ther Other (plea lived there and raised my childre Retail, Restaurants anc Housing

I live within the Princeton ISD#477 School Dist Retail, Restaurants and Services In Age Friendl

I live within the Princeton ISD#477 School Dist Retail, Restaurants and Services Industries

I live within the Princeton ISD#477 Manufactu Retail, Restaurants anc Housing

cod I live within the the City of Princeton (non-townships) Age Friendl

cod I live within the the City of Princeton (non-tow Retail, Restaurants and Services Industries

I live within the the City of Princeton (non-tow Retail, Restaurants and Services In Age Friendl

Twice New I live within the Princeton ISD#477 School Dist Retail, Restaurants and Services Industries

I live within the the Cit Tourism Retail, Restaurants and Services In Age Friendl

cod I live within the the Cit Tourism Manufactu Retail, Restaurants and Services Industries

I live within the Princeton ISD#477 School Dist Retail, Restaurants and Services Industries

I live within the Princeton ISD#477 School Dist Retail, Restaurants and Services Industries

cod I live within the the City of Princeton (non-tow Retail, Restaurants and Services Industries

Small town I live within the Princeton ISD#477 School District Age Friendl

I live within the the City of Princet Manufactu Retail, Restaurants anc Housing

Nothing real I live within the Princeton ISD#477 School Dist Retail, Restaurants and Services Industries

I live within the the City of Princeton (non-tow Retail, Restaurants and Services Industries

I live within the Princet Tourism Retail, Restaurants and Services Industries

I live within the Princeton ISD#477 Manufacturing and Industrial

cod I live within the Princeton ISD#477 Manufactu Retail, Restaurants and Services In Age Friendl

cod I live within the Princeton ISD#477 Manufacturing and IndTransporta Housing

I live within the the Cit Tourism Retail, Restaurants anc Housing

I live within the Princeton ISD#477 School Dist Retail, Restaurants anc Housing Age Friendl

cod I live within the the City of Princet Manufactu Retail, Restaurants and Services Industries

I live within the Princet Tourism Retail, Restaurants and Services In Age Friendl

Its been ho I live within the the Cit Tourism Retail, Restaurants and Services In Age Friendl

cod I live within the the City of Princet Manufactu Retail, Restaurants and Services Industries

I live within the Princeton ISD#477 School Dist Retail, Restaurants and Services In Age Friendl

cod I live within the the City of Princeton (non-tow Retail, Restaurants and Services Industries

cod I live within the the City of Princeton (non-tow Retail, Restaurants and Services Industries

I live within the the City of Princeton (non-tow Retail, Restaurants and Services Industries

I live within the Princet Tourism Retail, Restaurants and Services In Age Friendl

I work for a Princeton Tourism Manufactu Retail, Restaurants and Services Industries

cod I live within the the City of Princeton (non-tow Retail, RestTransporta Housing

I live within the Princeton ISD#477 School Dist Retail, Restaurants and Services In Age Friendl

I work for a Princeton area business Retail, Restaurants and Services In Age Friendl

I live within the the City of Princet Manufactu Retail, Rest Transportation

Other (plea Home grown Retail, Restaurants and Services Industries

Smaller fee Other (pleaLive in school district and work for Retail, Restaurants anc Housing

I live within the Princeton ISD#477 School Dist Retail, Rest Transportation Age Friendl

I live within the the Cit Tourism Retail, Restaurants anc Housing

I live within the the Cit Tourism Retail, Restaurants anc Housing

cod I live within the Princet Tourism Retail, Restaurants and Services Industries

cod I live within the the City of Princeton (non-tow Retail, Restaurants anc Housing Age Friendl

Other (plea Rural residential Manufactu Retail, Restaurants and Services Industries

I live within the Princeton ISD#477 Manufactu Retail, Rest Transportation

cod I live within the the City of Princeton (non-townships) Transportation

cod I live within the Princeton ISD#477 School Dist Retail, RestTransporta Housing

I live within the Princeton ISD#477 School Dist Retail, Restaurants and Services Industries

I live within the Princeton ISD#477 School Dist Retail, Restaurants and Services Industries

	I am a visitor	Retail, Restaurants and Services Industries
	I work for a Princeton area business	Manufacturing and Industrial Age Friendl
	I work for a Princeton area business	Tourism Retail, Rest Transportation
cod	I live within the the City of Princeton (non-townships)	Retail, Restaurants and Services Industries
cod	I live within the the City of Princeton (non-townships)	Tourism
cod	I live within the the City of Princeton (non-townships)	Manufacturing and Industrial Retail, Restaurants and Services Industries
Fair ground	Other (please specify)	Mille Lacs County Manufacturing and Industrial Retail, Restaurants and Housing
	I am a visitor	Tourism Transportation Age Friendl
	I work for a Princeton area business	Manufacturing and Industrial
	I live within the Princeton ISD#477 School District	Retail, Rest Transportation Age Friendl
	Other (please specify)	Own a business in Princeton Manufacturing and Industrial Retail, Restaurants and Services Industries In Age Friendl
	Other (please specify)	Township Retail, Restaurants and Services Industries
	I live within the the City of Princeton (non-townships)	Transportation Housing Age Friendl
	I live within the Princeton ISD#477 School District	Manufacturing and Industrial Retail, Restaurants and Services Industries
	Other (please specify)	The Mille Lacs County Manufacturing and Industrial
Princeton Area	I live within the the City of Princeton (non-townships)	Retail, Restaurants and Housing
cod	I live within the Princeton ISD#477 School District	Retail, Restaurants and Services Industries
	I live within the Princeton ISD#477 School District	Manufacturing and Industrial
Nothing.	I live within the the City of Princeton (non-townships)	Retail, Restaurants and Services Industries
Fairground	I live within the Princeton ISD#477 School District	Retail, Restaurants and Services Industries
	I live within the Princeton ISD#477 School District	Manufacturing and Industrial Retail, Restaurants and Housing
not sure	I live within the Princeton ISD#477 School District	Manufacturing and Industrial Retail, Restaurants and Services Industries In Age Friendl
	I live within the Princeton ISD#477 School District	Manufacturing and Industrial Transportation Housing
	I am a visitor	Tourism Housing Age Friendl
cod	I live within the Princeton ISD#477 School District	Retail, Restaurants and Services Industries
	I work for a Princeton area business	Tourism Retail, Restaurants and Housing
	I live within the Princeton area	Tourism Retail, Restaurants and Services Industries
	I work for a Princeton area business	Retail, Restaurants and Services Industries
	I live within the Princeton ISD#477 School District	Retail, Restaurants and Services Industries
	I live within the Princeton area	Tourism Housing
	I live within the Princeton ISD#477 School District	Manufacturing and Industrial Retail, Restaurants and Housing
Country life	I live within the the City of Princeton (non-townships)	Manufacturing and Industrial Retail, Restaurants and Services Industries
cod	I live within the the City of Princeton (non-townships)	Transportation Housing Age Friendl
	I work for a Princeton area business	Manufacturing and Industrial
cod	I live within the Princeton ISD#477 School District	Retail, Restaurants and Services Industries
cod	I live within the the City of Princeton (non-townships)	Manufacturing and Industrial Retail, Restaurants and Services Industries In Age Friendl
Walking trail	I live within the the City of Princeton (non-townships)	Manufacturing and Industrial
cod	I live within the Princeton area	Tourism Transportation Housing
cod	I live within the the City of Princeton (non-townships)	Manufacturing and Industrial
	I live within the Princeton ISD#477 School District	Retail, Restaurants and Services Industries
Family	Other (please specify)	Family Retail, Restaurants and Housing
	Other (please specify)	Township resident Manufacturing and Industrial
cod	I live within the the City of Princeton (non-townships)	Manufacturing and Industrial Housing
	Other (please specify)	Surrounding area Manufacturing and Industrial Retail, Restaurants and Services Industries In Age Friendl
The people	I live within the Princeton ISD#477 School District	Manufacturing and Industrial Retail, Restaurants and Services Industries
cod	I live within the Princeton ISD#477 School District	Retail, Restaurants and Services Industries
cod	I live within the Princeton ISD#477 School District	Manufacturing and Industrial
	I live within the Princeton ISD#477 School District	Manufacturing and Industrial Retail, Restaurants and Services Industries In Age Friendl

cod	Other (plea Princeton Township I work for a Princeton Tourism I live within the Princeton ISD#477 School Dist I live within the the City of Princeton (non-tow I live within the Princeton ISD#477 School Dist	Retail, Restaurants and Services In Age Friendl Retail, Restaurants and Services Industries Retail, Restaurants and Services In Age Friendl Retail, Restaurants and Services Industries Retail, Rest Transportation	
Nothing	I live within the Princet Tourism I live within the the City of Princet	Manufactu Retail, Restaurants and Services Industries Retail, Rest Transportation	
beyond tha	I live within the the City of Princeton (non-tow I live within the the Cit I live within the the City of Princeton (non-townships) I live within the the City of Princet I live within the Princet Tourism	Retail, Restaurants anc Housing Retail, Restaurants and Services In Age Friendl Transporta Retail, Restaurants and Services In Age Friendl Retail, Restaurants and Services In Age Friendl	Age Friendl Age Friendl Age Friendl
Family	Other (plea City home owner & work for Princeton business Other (plea have a Prii I live within the Princet Tourism I live within the the Cit I live within the Princet Tourism I live within the the Cit I live within the the City of Princet	Housing Housing Tourism Manufacturing and Industrial Retail, Restaurants anc Housing Manufacturing and Industrial Housing	
cod	I live within the the City of Princet I work for a Princeton area busines	Manufacturing and Industrial Manufacturing and Ind Transportation	Housing Age Friendl

as? (Select uWhat is you Comments

Private and Response Open-Ended Response

ly 50-59

ly 50-59

80 and over FAVORITE: There is not much in Princeton as a drawing crowd. I was born and ra

70-79 Fix the streets.

Private and 80 and over

80 and over

ly 80 and over

70-79 For people who don't have internet/smart phones a much better way to commu

Under 18

ly Under 18

19-29

60-69

70-79

60-69

60-69 I like small town.

60-69

ly 80 and over

ly 19-29 We really need a teen center.

ly 70-79

60-69

80 and over

ly 80 and over

70-79

70-79

80 and over

80 and over

70-79

70-79

Private and 80 and over

ly 80 and over

80 and over

ly 80 and over

80 and over

70-79

ly 80 and over

80 and over

70-79 Housing for seniors and a teen center.

80 and over

70-79

ly 80 and over

ly 70-79

80 and over

60-69 Housing and more for seniors. Teen Center for kids to go to instead of the street

ly Under 18

ly 19-29

ly 19-29

Under 18
 30-39
 ly 30-39 Community center is needed in this town. Kids need an outlet.
 ly 30-39
 60-69
 50-59 We need a community center/teen center.
 50-59
 19-29 Take the splash pad fence down. Allow it to be a free attraction - like many other
 Private and 19-29
 ly 70-79 Love Princeton; Lived here over 40+ years; Worked in Princeton! Schools/Comm
 40-49 Get more retail stores
 30-39 Go Tigers!
 19-29
 60-69
 ly 60-69 It would be great if they could bring back the drive through mail drop box again.
 ly 40-49
 30-39 residents seem very politically hostile- even just in stores, gas stations
 50-59
 50-59 Please invest in downtown Princeton to make it appealing to both residents and
 30-39
 ly 30-39
 Under 18 Get a good basketball team
 40-49
 60-69
 40-49 Princeton is a great community with many things to offer. We need to work on r
 40-49
 60-69
 19-29
 19-29
 Private and 30-39
 30-39
 Private and 50-59
 19-29
 ly 19-29 Being able to get the community more activities that are age appropriate, (ie.. te
 19-29 Build a community health/recreation center
 50-59 fix up More Parks
 40-49 We need restaurants & shopping for sure
 ly 40-49
 50-59
 40-49 Have to the rv park with discounts for veterans and allow monthly stays
 50-59
 Private and 50-59 Princeton has a few good restaurants but most lack quality food. Our sense of co
 30-39
 30-39
 ly 40-49
 19-29
 40-49
 40-49 #3 should have SCHOOLS. great education will attract more and more young fam

Private and 40-49
50-59
40-49
50-59

Private and 19-29
50-59
30-39
50-59

ly 30-39
ly 50-59

Private and 60-69
ly 50-59
60-69
40-49

also need more housing for disabled mobility challenged people.

ly 30-39
40-49
30-39
50-59
30-39

Make sure there are places of community geared toward people from birth to el

40-49
40-49
40-49
60-69
50-59

Enforcement of city ordinances by the Princeton Police Department are beyond |

ly 50-59
ly 19-29
ly 30-39
70-79

Private and 30-39
50-59
30-39
60-69

ly 19-29

Private and 70-79
50-59
40-49
Under 18

we need more seat down restaurants and less gas stations

ly 30-39
60-69
19-29
50-59

I also think that there should be something to help the homeless teenagers.

60-69
40-49
50-59

more work on the roads and potholes.

ly 30-39
ly 40-49

The city should invest more funds towards parks and trails. In order to attract yc

Private and 40-49
Private and 40-49

	40-49	More variety of new restaurants
	50-59	Need MORE Big Name Restaurants- Olive Garden, Applebee's, TGI Fri's, or others
Private and	50-59	
	19-29	
ly	19-29	
	19-29	More restaurant selection would be great! Especially something along the lines c
	30-39	
ly	30-39	
ly	40-49	
	40-49	
	60-69	Work at bringing retail and industry instead of taxing them so high that they stay
	50-59	There is no where to shop or eat in Princeton! We need more big box stores for
ly	30-39	Princeton needs walking trails, given the large amount of people who live outsid
	40-49	
ly	60-69	
	30-39	
	50-59	
	40-49	
	19-29	Add more recreational outdoor activity spots. I think this would increase the mo
	40-49	we only have the "same kind" of restaurants here. There isn't a nice place to go.
	30-39	
	40-49	
	50-59	We need things in this town for the young people. Better housing and apartmen
	40-49	Making the intersection more lanes or a turn lane coming out of northland drive
	40-49	
	50-59	could use more family oriented activity centers/family outing things to do---batti
ly	60-69	
	19-29	
	19-29	
	40-49	
Private and	50-59	
ly	40-49	
	40-49	
	60-69	
	50-59	none
	40-49	
Private and	40-49	
	30-39	
ly	40-49	
	40-49	
	30-39	
	30-39	
	50-59	need more of a draw for Princeton residents, better, upscaled business, restaura
	50-59	
ly	40-49	
	30-39	
Private and	40-49	
	30-39	

ly	30-39	
	Under 18	Invest in airport.
	Under 18	Invest in airport.
ly	Under 18	
ly	30-39	
ly	Under 18	
	Under 18	Invest in airport.
ly	Under 18	Invest in airport.
	Under 18	Invest in airport.
	Under 18	Invest in airport.
	Under 18	Invest in airport.
	Under 18	Invest in airport.
	Under 18	Invest in airport.
	Under 18	Invest in airport.
	Under 18	Invest in airport.
	Under 18	Invest in airport.
	60-69	Invest in runway at the airport; lighted walk paths; indoor heated pool.
	60-69	Invest in airport.
ly	40-49	Invest in walk paths with lighting.
	Under 18	
ly	Under 18	
ly	Under 18	
Private and	19-29	Invest in agriculture. Need more transparency especially regarding the schools in
	19-29	
ly	Under 18	City invest to be less reliable on government.
ly	Under 18	
ly	Under 18	
	60-69	This is a community with virtually little for job opportunities, waning tax base an
	30-39	Parks and recreation, should be a high priority
ly	30-39	Would love to see more development of non-franchise restaurants and shops, ar
Private and	19-29	The School District and facilities need to be improved in order to attract more pe
	Under 18	
Private and	40-49	
ly	40-49	
Private and	60-69	The Princeton Public School will keep good families away. We need to set up go
	30-39	
	50-59	TacoBell...Culvers...Menards...FleetFarm...
ly	60-69	The city should work with Sherburne and Mille Lacs counties to get the bike trail
Private and	50-59	
ly	70-79	City streets need lots of work !!!!!
	40-49	The Princeton Area Chamber of Commerce is amazing!
	30-39	I wish there was a target, chipotle and other restaurants near the Walmart side c
	50-59	continue updating/improving park system
	60-69	
	50-59	
	70-79	Love living in Princeton - Very friendly & family oriented!
ly	30-39	
	60-69	I wish they could help out by Walmart and not have such HIGH property taxes so

ly	40-49	
	30-39	
ly	70-79	
	50-59	
	50-59	
	60-69	
	40-49	
	19-29	Bring in better restaurants!! And shops
	30-39	Princeton is a small town community that used to be a destination and our mone
	40-49	
	30-39	
	40-49	Keep it small.
ly	50-59	Princeton NEEDS to invest in quality activities for youth ages 12-17 to participate
ly	30-39	
Private and	50-59	
Private and	40-49	Grew up in Princeton. Needs to keep it's small town charms, mom & pop stores,
ly	40-49	
	30-39	Please focus on getting more for kids! Gyms (that allows younger kids), an outdo
ly	30-39	
	50-59	
	40-49	
	40-49	
	40-49	I am within the Princeton School district but hate how so many people on the Pr
	30-39	Lifestyle Tint Rules!
Private and	40-49	
ly	30-39	
	50-59	
Private and	60-69	
ly	40-49	Need stuff for kids to do
	40-49	
Private and	40-49	
ly	60-69	
	30-39	Na
	19-29	
	30-39	I grew up in Princeton and recently moved back, in happy to see more businesse
	30-39	
	30-39	
Private and	50-59	
ly	40-49	
	19-29	
ly	60-69	
	30-39	Lifestyle tint brings in so much new traffic to Princeton. Theyâ€™re amazing at c
	30-39	
	40-49	We need a community center with a public pool or water park for the communit
	40-49	More chain restaurants and stores!! Enough pizza and grocery already.
	30-39	
	50-59	
ly	50-59	

	30-39	
	40-49	We need more retail!!
ly	19-29	
	19-29	
ly	30-39	
Private and	60-69	
ly	19-29	
	40-49	
	50-59	
	30-39	School district sucks
	60-69	
ly	30-39	Would love to see more care put into the downtown area to make it more friend
	40-49	
	40-49	Panera bread
	19-29	We need better food options.
	19-29	
	50-59	
ly	40-49	
	70-79	
	40-49	
ly	19-29	
	40-49	
ly	30-39	Please, for the love, invest in better snow removal necessities. Other than that, v
ly	30-39	We NEED more places to eat that's not pizza or burger joints. We lose money as
Private and	70-79	
ly	30-39	
	30-39	
	60-69	Princeton needs to work harder at buildin the community. Building a Community
	40-49	
ly	30-39	N/a
	19-29	
	50-59	
Private and	30-39	
ly	40-49	
	30-39	
	30-39	
	30-39	
ly	30-39	The north end of town is pretty neglected. No sidewalks .roads are all patchey. S
	50-59	
	40-49	
Private and	40-49	
ly	60-69	Affordable senior housing. Our population is aging
	70-79	The downtown needs a 'facelift'
	60-69	I would like to see more dark sky addressed. Stop with the blazing lights and con
	50-59	
	50-59	
	40-49	
	50-59	

	50-59	
Private and	40-49	
	30-39	
	60-69	I have lived in Princeton all my life. I have seen it grow in population but not so n
	50-59	TEST
Private and	60-69	I have lived in the city of Princeton for over 30 years and continue to be very disa
	50-59	
ly	19-29	
	50-59	
ly	60-69	
ly	50-59	
	60-69	We need more restaurants that stay open past 2pm
ly	60-69	There are NO decent 55+ apts/housing. Seems that section 8 and market values .
Private and	40-49	Fix up the parks especially Mark Park. I remember when that was a great park an
	50-59	
Private and	50-59	Love this town! moving into town Erickson estates best choice I ever made!
	60-69	
	40-49	
	50-59	
	50-59	I would love to see Princeton do more to encourage more retail shopping & food
	60-69	Love this community and would be very happy to see new and existing business
ly	60-69	
	60-69	While Princeton is a great place to live it could use some attention in the followin
ly	30-39	
	30-39	Princeton bulletin board and facebook pages alike are so negative and such a dis
	19-29	Need more businesses in town and more commercial building sites.
	40-49	
	19-29	Chipotle please
	40-49	
	19-29	
	40-49	Princeton needs to grow. We need more area.
	50-59	Back the Blue !
ly	60-69	
	30-39	
	40-49	
ly	50-59	
	60-69	
	50-59	
	30-39	
	30-39	
	60-69	
Private and	19-29	
Private and	50-59	It seems like in the past 15-20 years the city has been underprepared/didn't get
ly	30-39	
Private and	50-59	
	40-49	Na
	40-49	
ly	60-69	

Private and 60-69	Improve dog park. Lighting, landscaping
Private and 19-29	
Private and 40-49	
30-39	
30-39	
50-59	Princeton has a horrible reputation for drugs and the people are not known to be
50-59	Princeton is a great place to live!
ly 80 and over	This town needs to upgrade their sewer systems and improve their streets.
ly 50-59	
ly 60-69	I feel that the older population is being TOTALLY left out of affordable housing. A
ly 50-59	
ly 50-59	
30-39	Non
50-59	
40-49	No more new neighborhoods are needed
Private and 30-39	Great job
50-59	
30-39	
ly 60-69	
50-59	

ised here. However was gone 50 years and am back. Things are not any better after 50 years. The main s

inicate. Informal people of church; school; community event in Zimmerman, Milaca, Long Siding, Pease, l

r cities in MN.

unity working together! A great place to raise our boys!!

It is hard to try to mail a letter when you have to actually get out of your car, especially in the winter. It

potential businesses.

re-energizing the downtown retail community and how to draw customers downtown.

ens to small children) something productive to do would be beneficial for everyone and will help with n

ommunity would be better if we had more events to bring everyone together. Adults need to feel a sens

ilies and improve community morale. lets take care of the kids and secure a great tax base

lderly

pathetic!

ounger families there needs to be more retail options and entertainment options. The brewery opening i

s

of a Panera or Firehouse/Jersey Mikes. Better grocery options would also be nice. I love Coburns, but wo

y away.

shopping and better restaurants that are not fast food!

e of town Princeton needs walking/biking/running trails that are accessible by car or foot. More investm

ral of town and help bring a little color to all of our lives. Most of the workforce is constantly working an
We have far too many pizza shops and parts stores.

nts.

by the McDonalds

ing cages, etc

ants-there will be a huge change in the coming years to the highway portal going north, this town needs

1 the district.

2 d very little draw for ANY economic activity - it is a bedroom community with little future growth potent

3 nd recreation for all ages.

4 eople to move here. There is a large competitive school district that is located near by that offers better |

5 od private Christian Schools or our Children and our future is at stake. Could use a good family restaura

6 from Zimmerman and further north. This would bring people to Princeton but it would also hold people h

7 of town. A minute clinic would be nice as the closest one is Cambridge. More summer kids activates or s

8 9 lots would sell and develop out there!

ey should be spent preserving the history and bringing back old sights instead of tearing down trees and

in. ie.. skate park, park and rec programs

, good food while increasing outside traffic to sustain them. AFFORDABLE housing/rent opportunities for
or pool, anything that will help keep them here and busy. You can't focus all the attention on the older

Princeton Facebook page post racist comments. They also ridicule anyone who speaks against their politi

is come in and flourish here, hoping to see more!

ustomer service and a true delight to have in Princeton

ty and to boost tourism.

ally for retail tenets to bring the city back to life, as well as more attention to our parks and recreation for

we need to draw people in - we can't appeal to lake folk really, so what will bring people in? That's rheto
a community because people have to travel to eat. Since they're already eating some where else they s

y Center needs to be top priority. This would improve the quality of life for our families.

ome due to the county but still in your city and seams like all the businesses are moving to Sherburne Cc

sider other options. We can still be safe. I was on a Bennett Colorado board, decades ago, and we were

nuch in businesses. I would like to see the taxes go DOWN. Property taxes are a terrible joke on us. Is th
appointed in the lack of new businesses. I don't know if it is due to the HIGH Mille Lacs taxes or the lack of

Apts are catered to. That along with treatment housing in residential areas.
and a busy place especially during the river festival. It is nowhere near the level now.

and in the downtown area. There are too many businesses in downtown that don't pull in retail custom
ers to thrive here!

ing areas. We must invest in infrastructure upgrades to make us competitive with other "high end" commu
nity areas. It's a tasteful representation of our town. Born and raised in Princeton, it's disappointing. Our community

without firm commitments from private entities before taking public sector action that didn't help projects com

e very friendly.

\ majority CANNOT afford a 250,000 one-level home. Section 8 housing along with market value apartm

street road block for businesses. Thanks to our police who said "don't change the road". OTHER COMME

maybe an events column in the Town & Country Shopper for free.

is dangerous. Thank you.

nore foot traffic

e of community to make the town better. It seems like most people have to leave town to eat or socializ

in the spring is going to be a great start to this.

would like to see Walmart replaced/competing with something like a Target or Hyvee

ment in small business, to fill the open spaces downtown. Allow for more restaurants, even if that means c

id doesn't have the time to go out of town for the weekend to relax and shut their minds off. If there v

to get updated!!

tial, today!

programs, and people are moving there instead.

nt as well.

ere who go elsewhere to enjoy that sort of activity. Good for restaurants and retail.

ports. I have 2 kids under 4 and not a lot of sports or activities are run that a working mom can get to. Al

digging up fields for more housing I personally don't want developments or town home communities or

r residential & business.

aged people.

cal opinions. My husband and I lived in Princeton and our taxes were high but we did not see where th

r our kids

prical, I'm not sure I have the answer.

pend their money shopping near where they eat. We NEED kid friendly places. Bring a theater back, may

ounty side so maybe you should look into why that is. Thank you that is all for now.

: moving toward this type of lighting

hat why we can't get businesses to come here? We need to make it attractive to come to Princeton. I lo
of incentives offered by the city but very unfortunate that almost every new business that comes to Prin

ners which makes it hard for the others to survive. Princeton use to have a wonderful thriving downtow
munities. Streets, sidewalks, stormsewer, sanitary mains, watermains, streetlighting to be particular. Be
/ should be represented in a more positive manner & encouraged to come together not argue over our s

ie to fruition.

ments we have enough of. Also wondering what kind of supervision that residents of Belle Haven and the

ENTS: The rent is becoming too high for 55+ citizens. Crystal Court have raised rent and it is no longer aff

ze which takes away from our local community. I suppose that is a drawback of a small town, we can onl

city ordinances need to change to allow for more liquor licenses.

was a place in town (or near) that would resolve the issue.

II ECFC classes are during the day. Swim lessons

r apartments complexes ruining this city we are a small town.... a country town... and a community the b

e money went.

/be a grand slam, arcades? We are surrounded by growing communities, we need to grow too

ove the Christmas decor and flower boxes, the blooming apple trees on main street. They take care of th
inceton locate on the Sherburne County side of Princeton.

in but not so much anymore.

g, borrow or steal (TAX) all the money you can to get it done.

small businesses and restaurants.

e residential treatments residents have?

fordable for 50+ citizens. Rent has gone up all over Princeton. That is NOT age-friendly. There needs to b

ly offer what people are willing to invest in town. More people who want to make Princeton "their" hom

igger we build the more we lose

he streets pretty well. I like Princeton overall. Other than property taxes, it's a good place to live.

ie 2 salaries to pay for rent here. There is not many places for 55+ citizen thats affordable anymore. The

hometown will show up as they promote and invest here. We don't really have that sense of pride and ownership

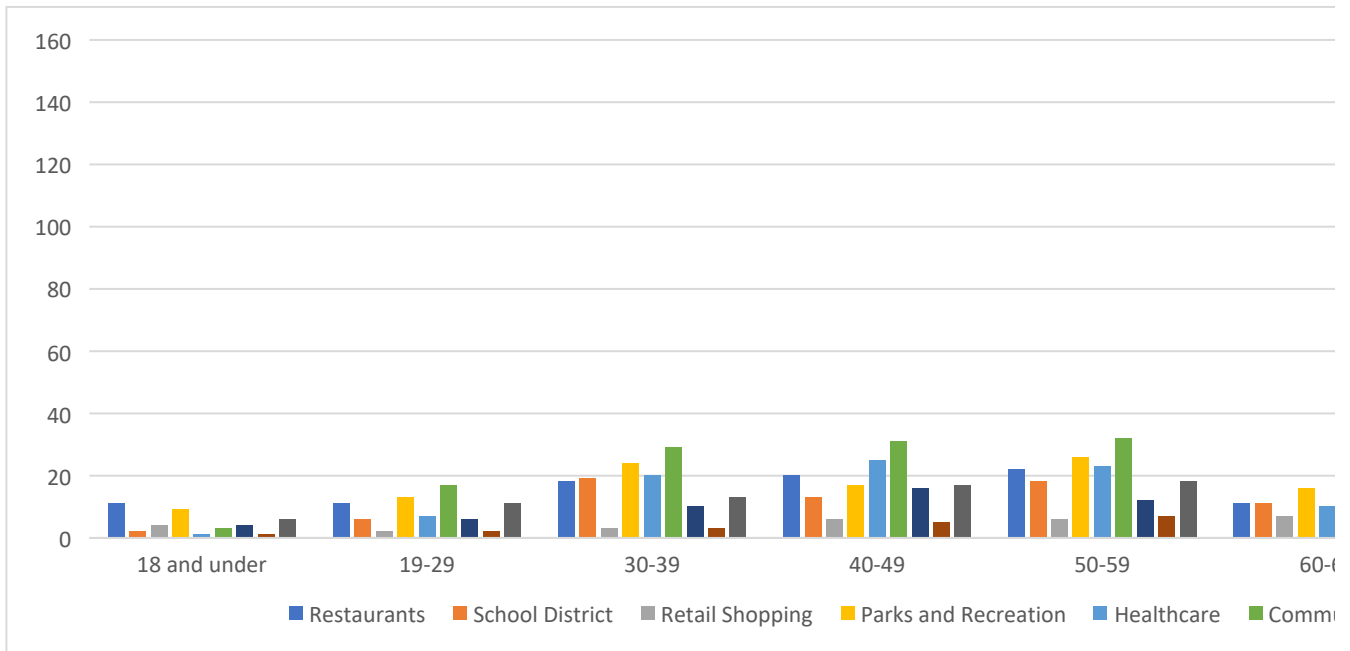
salaries aren't keeping up with living and housing.

ership in Princeton. I'm not sure how you get it, I'm sure it takes money, patience and dedication. Also a

willingness for companies/people to want to invest in town and make it their own.

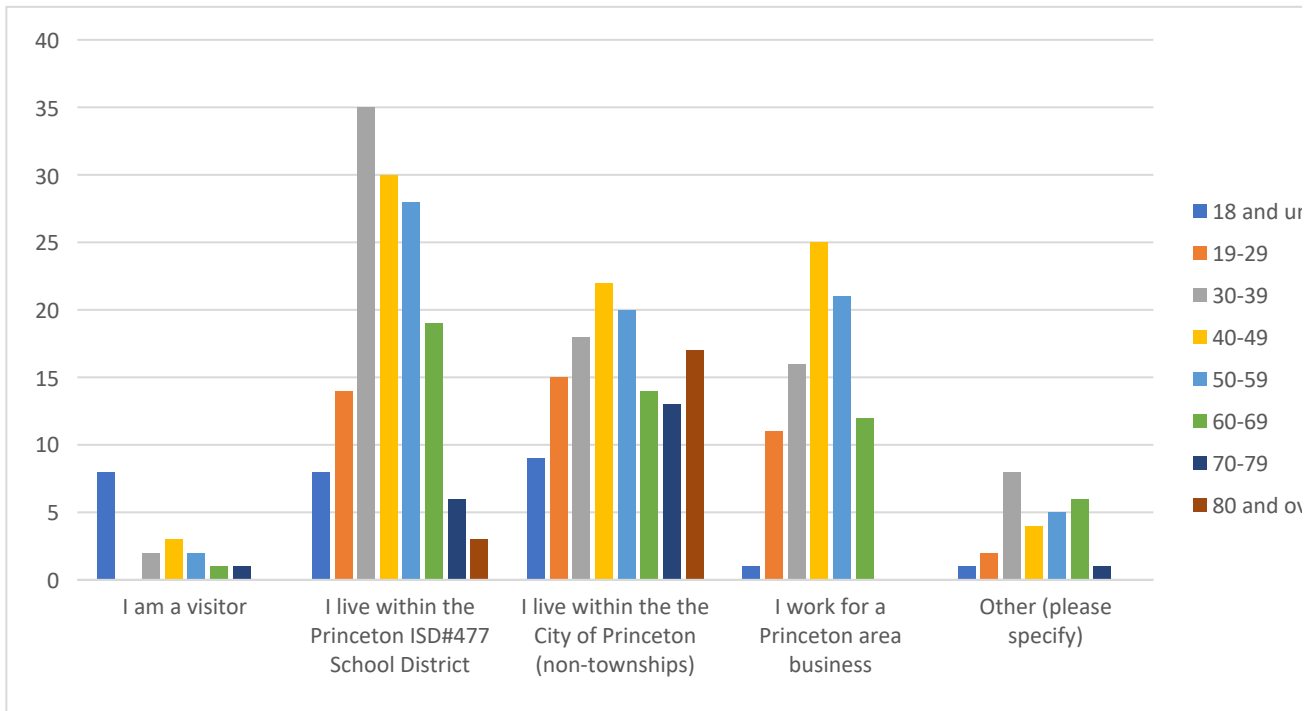
Sum of Survey Count	Column Labels								
Row Labels	18 and under	19-29	30-39	40-49	50-59	60-69	70-79	80 and over	
Neighborhood	6	11	13	17	18	14	7	10	
(blank)	21	31	66	67	58	38	14	10	
Grand Total	27	42	79	84	76	52	21	20	

Row Labels	18 and under	19-29	30-39	40-49	50-59	60-69	70-79	80 and over	
Restaurants	11	11	18	20	22	11	12	8	
School District	2	6	19	13	18	11	6	2	
Retail Shopping	4	2	3	6	6	7	7	3	
Parks and Recreation	9	13	24	17	26	16	11	4	
Healthcare	1	7	20	25	23	10	2		
Community	3	17	29	31	32	18	10	8	
Employment	4	6	10	16	12	8	2		
Housing	1	2	3	5	7	9	4	6	
Neighborhood	6	11	13	17	18	14	7	10	



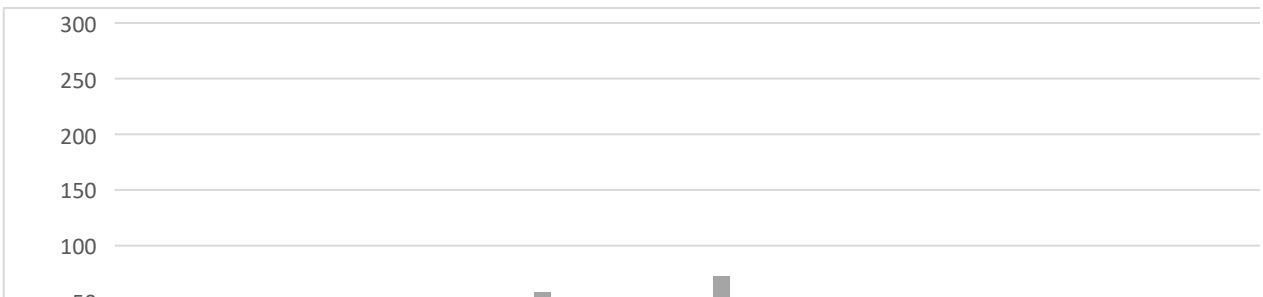
Sum of Survey Count	Column Labels							
Row Labels	18 and under	19-29	30-39	40-49	50-59	60-69	70-79	80 and over
I am a visitor	8		2	3	2	1	1	
I live within the Princeton ISD#477 Sc	8	14	35	30	28	19	6	3
I live within the the City of Princeton	9	15	18	22	20	14	13	17
I work for a Princeton area business	1	11	16	25	21	12		

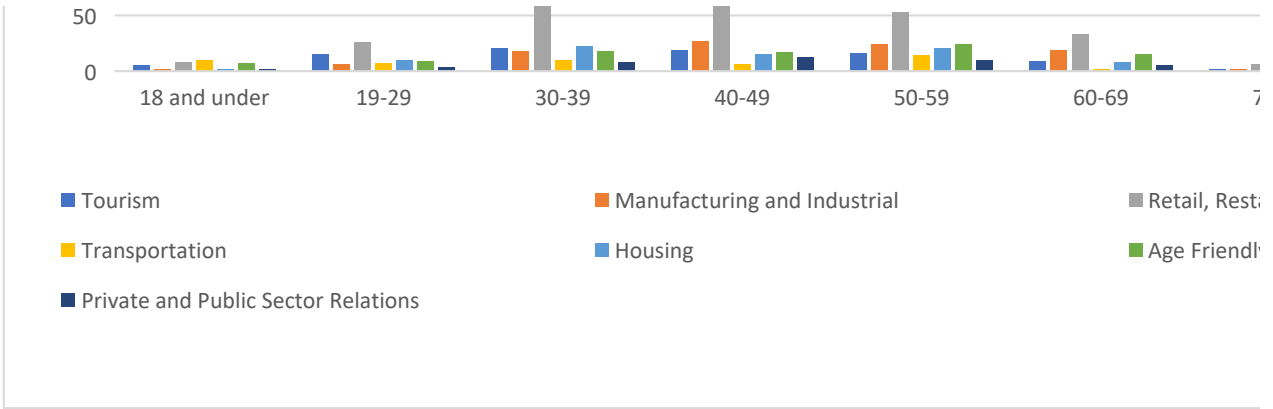
Other (please specify)	1	2	8	4	5	6	1	
Grand Total	27	42	79	84	76	52	21	20



Sum of Survey Count	Column Labels							
Row Labels	18 and under	19-29	30-39	40-49	50-59	60-69	70-79	80 and over
Private and Public Sector Relations								2
(blank)	27	42	79	84	76	52	21	18
Grand Total	27	42	79	84	76	52	21	20

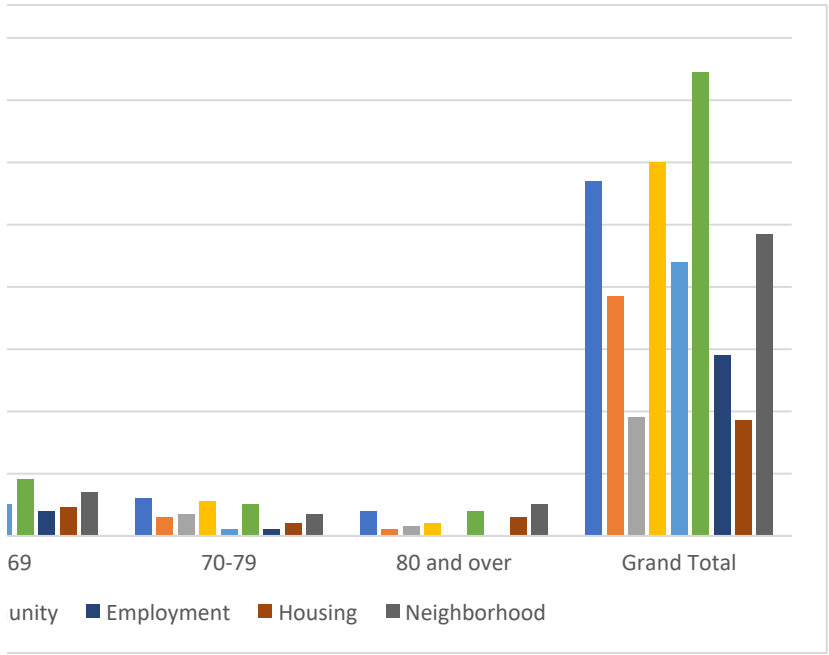
Row Labels	18 and under	19-29	30-39	40-49	50-59	60-69	70-79	80 and over
Tourism	5	15	20	19	16	9	2	
Manufacturing and Industrial	1	6	18	27	24	19	2	1
Retail, Restaurants and Services Indu:	8	26	58	72	53	33	6	1
Transportation	10	7	10	6	14	2	2	
Housing	1	10	22	15	20	8	4	
Age Friendly	7	9	18	17	24	15	2	1
Private and Public Sector Relations	1	3	8	12	10	5	2	





(blank)	Grand Total
1	97
	305
1	402

(blank)	Grand Total
1	114
	77
	38
	120
	88
1	149
	58
	37
1	97



Grand Total
17
143
128
86

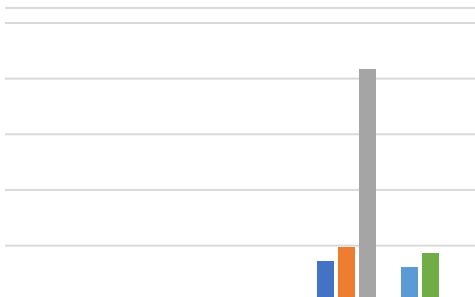
27

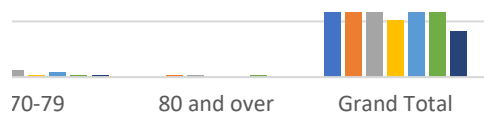
401



(blank) Grand Total	
	2
1	400
1	402

(blank) Grand Total	
	86
	98
1	258
	51
	80
	93
	41





Restaurants and Services Industries

by

Survey Count	what is your favorite part of	what is your favorite part of	what is your favorite part of	what is your favorite part of	what is your favorite part of	what is your favorite part of	what is your favorite part of	what is your favorite part of	what is your favorite part of
--------------	-------------------------------	-------------------------------	-------------------------------	-------------------------------	-------------------------------	-------------------------------	-------------------------------	-------------------------------	-------------------------------

1							Communi ty		
---	--	--	--	--	--	--	---------------	--	--

	Restauran 1 ts					Healthcar e			
--	-------------------	--	--	--	--	----------------	--	--	--

	Restauran 1 ts	School District		Parks and Recreatio n			Communi ty		
--	-------------------	--------------------	--	-----------------------------	--	--	---------------	--	--

	Restauran 1 ts			Parks and Recreatio n	Healthcar e	Communi ty	Employ ment		Neighbor hood
--	-------------------	--	--	-----------------------------	----------------	---------------	----------------	--	------------------

	Restauran 1 ts					Communi ty			Neighbor hood
--	-------------------	--	--	--	--	---------------	--	--	------------------

	Restauran 1 ts	School District	Retail Shopping			Communi ty			Neighbor hood
--	-------------------	--------------------	--------------------	--	--	---------------	--	--	------------------

Restaurants
1 ts

Retail
Shopping

Community

Restaurants
1 ts

Parks and
Recreation

Community

Neighborhood

Restaurants
1 ts

Parks and
Recreation

Healthcare

Community

Employment

Restaurants
1 ts

Healthcare

Restaurants
1 ts

School
District

Retail
Shopping

Healthcare

Employment

Restaurants
1 ts

Parks and
Recreation

Healthcare

Employment

Restaurants
1 ts

Community

Restaurants
1 ts

School
District

Healthcare

Community

Restauran
1 ts

Restauran
1 ts

Retail
Shopping

Healthcar
e

Restauran
1 ts

Parks and
Recreatio
n

Healthcar
e

Communi
ty

Employment

Restauran
1 ts

Healthcar
e

Employment

Restauran
1 ts

Healthcar
e

Restauran
1 ts

Restauran
1 ts

1 ts Restaurant School District Retail Shopping Parks and Recreation Community Employment Housing Neighborhood

1 ts Restaurant School District

1 ts Restaurant Healthcare Employment

1 ts Restaurant Healthcare Employment

1 ts Restaurant Healthcare

1 ts Restaurant

1 ts Restaurant

Restauran
1 ts

Communi
ty

Restauran
1 ts

Healthcar
e

Employment

Restauran
1 ts

Parks and
Recreatio
n Healthcar
e

Employment

Restauran School
1 ts District

Healthcar
e

Employment

Restauran
1 ts

Parks and
Recreatio
n

Restauran
1 ts

Healthcar
e

Restauran
1 ts

Healthcar
e

Restauran
1 ts

Parks and
Recreatio
n

Restauran
1 ts

Retail
Shopping

Parks and
Recreatio
n

Restauran
1 ts

Parks and
Recreatio
n

Restauran
1 ts

Parks and
Recreatio
n

Employment

Neighborhood

Restauran
1 ts

Restauran
1 ts

Retail
Shopping

Parks and
Recreatio
n

Restauran
1 ts

Retail
Shopping

Parks and
Recreatio
n

1 ts Restaurant School District Parks and Recreation Community

1 ts Restaurant Parks and Recreation

1 ts Restaurant

1 ts Restaurant Parks and Recreation Healthcare Community

1 ts Restaurant School District Retail Shopping Parks and Recreation Healthcare Community Neighborhood

1 ts Restaurant School District Parks and Recreation Healthcare Community

1 ts Restaurant School District Community Neighborhood

Restauran
1 ts

Restauran
1 ts

Parks and
Recreatio
n

Restauran
1 ts

Communi
ty

Restauran
1 ts

Communi
ty

Neighbor
hood

Restauran School
1 ts District

Retail
Shopping

Communi
ty

Neighbor
hood

Restauran
1 ts

Parks and
Recreatio
n

Restaurant
1 ts

Restaurant
1 ts

Restaurant
1 ts

Parks and
Recreation

Restaurant
1 ts

Restaurant School
1 ts District

Restaurant
1 ts

Healthcare

Neighborhood

Restaurant
1 ts

Retail
Shopping

Restauran
1 ts

Restauran
1 ts

Communi
ty

Restauran School Retail Parks and
1 ts District Shopping n Recreation Healthcare Communi
ty Housing Neighbor
hood

Restauran
1 ts

Communi
ty

Neighbor
hood

Restauran Retail Parks and
1 ts Shopping n Recreation Healthcare

Neighbor
hood

Restauran Retail Parks and
1 ts Shopping n Recreation

Restauran
1 ts

Restauran
1 ts

Retail
Shopping

Parks and
Recreatio
n

Healthcar
e

Communi
ty

Restauran
1 ts

Restauran
1 ts

Parks and
Recreatio
n

Employment

Restauran
1 ts

Parks and
Recreatio
n

Restauran
1 ts

Restauran School
1 ts District

Parks and
Recreatio
n

Communi
ty

Restaurants
1 ts
Parks and Recreation
Healthcare
Community
Housing

Restaurants
1 ts
Retail Shopping
Healthcare
Housing
Neighborhood

Restaurants
1 ts
School District
Retail Shopping
Parks and Recreation
Community

Restaurants
1 ts
School District
Parks and Recreation
Healthcare

Restaurants
1 ts
Retail Shopping
Community

Restaurants
1 ts
Parks and Recreation
Healthcare

Restaurants
1 ts
School District
Parks and Recreation
Healthcare
Community
Neighborhood

1 ts Restaurant School District Retail Shopping Parks and Recreation Community

1 ts Restaurant Healthcare

1 ts Restaurant School District Parks and Recreation Healthcare Community

1 ts Restaurant

1 ts Restaurant Retail Shopping Community

1 ts Restaurant Community

Restauran
1 ts

Communi
ty

Restauran
1 ts

Parks and
Recreatio
n

Employment

1 School
District

Housing Neighborhood

1 School
District

Parks and
Recreatio
n

Communi
ty

Neighborhood

1

Communi
ty

1 School
District

Communi
ty

1 School District Community Employment Housing Neighborhood

1 Parks and Recreation Healthcare

1 Parks and Recreation Community

1 Parks and Recreation Community

1 Parks and Recreation Community Neighborhood

1

1 Healthcare Employment

1 Parks and Recreation Employment Housing

1 School District

1 Community

1 Parks and Recreation Healthcare Community Neighborhood

1 Parks and Recreation Healthcare Community Employment Neighborhood

1 School District Parks and Recreation Housing Neighborhood

1 Neighborhood

1 Community Neighborhood

1 Employment

1 School District Parks and Recreation

1 Healthcare

1 Parks and Recreation Community

1 Employment

1 Community

1 Community
ty

1 Retail
Shopping

1 Healthcar Community
e ty

1 Employment
ent

1 Healthcar
e

1 Parks and Recreation Community
n ty

1 Parks and Recreation Community
n ty

1 Employment

1 Employment

1 Community Neighborhood

1 Healthcare Employment

1 Community

1 Healthcare

1 Community

1 School District Parks and Recreation Healthcare Community Employment Housing Neighborhood

1

School
District

Communi
ty

1

1

Healthcar
e

1

Healthcar
e

1

Employment

Neighborhood

1

School
District

Communi
ty

Housing

Neighborhood

1 School District Parks and Recreation Community Housing

1 Community

1 School District

1 Parks and Recreation Housing Neighborhood

1 Healthcare

1 Healthcare

1 Parks and Recreation Healthcare

1

Employment

1

Parks and Recreation

Community

1

School District

Community Employment

1

Healthcare

1

Community

1

Community

1

Employment

1 Healthcare

1

1 Healthcare

1 Community

1 Community

1 Parks and Recreation

1 Employment

1 Employment

1 Employment

1 School District Parks and Recreation Healthcare Community Employment Neighborhood

1 Healthcare Employment

1 Employment

1 Employment

1 Parks and Recreation Healthcare

1 School District

1 Healthcare

1 Employment

1 Employment

1 Healthcare

1 Healthcare Community Neighborhood

1 Community

1

Neighborhood

1

Healthcare

1

Community

1

Employment

1

Healthcare Community

1

Community

1

Community

1 Healthcare Community

1 Community

1 Community

1

1 Healthcare Community

1 Housing

1 Healthcare

1

Healthcar
e

1

Communi
ty

1

1

Employment

1

Healthcar
e

1

Communi
ty

1

Healthcar
e

1

Healthcar
e

Employment

1

1

1

1

1

1

1

1

1

1

1

1

1

1

1

Parks and
Recreatio
n

1

Neighbor
hood

1

Parks and
Recreatio
n

1

Parks and
Recreatio
n

Communi
ty

1 Parks and Recreation

1 Neighborhood

1 School District Parks and Recreation

1 Community

1 Neighborhood

1 School District Community Neighborhood

1

1

Parks and
Recreation

Healthcare

Community

Neighborhood

1

School
District

Parks and
Recreation

Employment

1

Parks and
Recreation

Community

Neighborhood

1

School
District

Parks and
Recreation

Healthcare

1

Parks and
Recreation

Community

1 Community

1 Parks and Recreation

1 School District Retail Shopping Parks and Recreation Community

1 School District

1 School District Neighborhood

1 Retail Shopping Housing

1 Retail Shopping

1 School District

1 Neighborhood

1 Healthcare

1 Housing Neighborhood

1

1 Community

1 Parks and
Recreation

1 Neighborhood

1 Community

1 Community

1 Community

1 School
District

1 Healthcare Community

1 School District Community Neighborhood

1 Parks and Recreation

1

1 Parks and Recreation Healthcare Housing Neighborhood

1 School District Community Neighborhood

1

Neighborhood

1

School District

Healthcare

1

Neighborhood

1

Housing

1

Parks and Recreation

1

Parks and Recreation

1 Parks and Recreation Community

1 School District

1 Parks and Recreation Community Neighborhood

1 Neighborhood

1

1 Parks and Recreation

1 School District

1 Community

1 School District

1 Community

1 Parks and Recreation

1 Neighborhood

1 Neighborhood

1 Community

1 Retail Shopping

1 Housing

1 Community Housing Neighborhood

1 Retail Shopping

1

1 Community Housing

1 School District

1 Parks and Recreation

1 Healthcare Community Neighborhood

1 Parks and Recreation

1 School District Parks and Recreation Community

1

Housing

1

1

School
District

1

Neighbor
hood

1

School
District

Neighbor
hood

1

School
District

1 School District Parks and Recreation Healthcare Neighborhood

1 Parks and Recreation

1 School District

1 School District

1 Healthcare

1

1 School District Parks and Recreation

1 Community

1 Healthcare

1 Community Neighborhood

1 Parks and Recreation Employment Neighborhood

1 Healthcare

1 Neighborhood

1 Parks and Recreation Neighborhood

1 Parks and Recreation

1 Parks and Recreation

1 Community

1 Community Neighborhood

1 Retail Shopping Neighborhood

1 Healthcare Neighborhood

1

1 Employment

1 School District Parks and Recreation Healthcare Community Housing

1 Community

1 Community

1
Parks and
Recreation

1 School District Community

1

1 School District Community

1

1 Community

1 Community Housing Neighborhood

1 Healthcare Community Employment

1 School District

1 Parks and Recreation

1 Community

1

1 Parks and Recreation Community Housing Neighborhood

1 Employment

1

Neighbor
hood

1

Neighbor
hood

1

1

Neighbor
hood

1

School
District

1

1 Retail Shopping

1 School District Healthcare Community Neighborhood

1

1 Neighborhood

1 Parks and Recreation Healthcare Employment Neighborhood

1 School District Healthcare Employment

1 Neighborhood

1 Parks and
Recreatio
n

1 Parks and
Recreatio Healthcare Communi
n e ty

1 Communi
ty

1

1 Parks and
Recreatio Healthcare Communi
n e ty

1 School
District

1
Parks and Recreation

1

1
Community

1
Parks and Recreation

Community

1
Community

1			Healthcare	Community			Neighborhood
1			Parks and				
1	Restaurant						
1							
1	Restaurant	Retail		Community			
1	Restaurant	Retail	Parks and	Healthcare	Community	Employment	Housing
1	Restaurant	School	Parks and		Community	Employment	Neighborhood
1			Parks and		Community	Employment	Neighborhood
1			Parks and		Community	Employment	Neighborhood
1	Restaurant						Housing
1			Parks and				Neighborhood
1		School					Housing
1	Restaurant	School					Neighborhood
1	Restaurant		Parks and		Community	Employment	Neighborhood
1					Community	Employment	

1	Restauran		Retail	Parks and					Neighbor
1						Employment	Housing		Neighbor
1	Restauran			Parks and	Communi		Housing		Neighbor
1	Restauran			Parks and			Housing		
1	Restauran			Parks and					
1	Restauran	School			Communi				
1		School					Housing		Neighbor
1	Restauran	School	Retail		Communi				
1	Restauran								Neighbor
1					Communi				Neighbor
1		School		Parks and	Communi				Neighbor
1	Restauran		Retail		Communi				
1			Retail		Communi				
1			Retail		Communi		Housing		
1	Restauran		Retail				Housing		Neighbor
1							Housing		
1	Restauran			Parks and	Communi				
1	Restauran				Communi				Neighbor
1	Restauran				Communi				Neighbor
1					Communi				Neighbor
1	Restauran			Parks and	Communi				
1	Restauran			Parks and	Communi				
1	Restauran		Retail	Parks and	Communi				Neighbor
1		School		Parks and		Employment			Neighbor
1	Restauran				Communi	Employment	Housing		Neighbor
1				Parks and					
1	Restauran	School	Retail	Parks and					
1	Restauran	School	Retail	Parks and	Healthcar	Communi	Employment	Housing	Neighbor

What is your favorite part of	How do you identify yourself I live within the the City of Princeton (non-townships)	Which of the following areas	Which of the following areas	Which of the following areas	Which of the following areas	Which of the following areas	Which of the following areas	Which of the following areas	Which of the following areas
		Tourism							
I work for a Princeton area business I live within the the City of Princeton (non-townships)				Retail, Restaurants and Services Industries		Housing			
			Manufacturing and Industrial	Retail, Restaurants and Services Industries		Housing			
I work for a Princeton area business				Retail, Restaurants and Services Industries		Housing	Age Friendly		
Other (please specify)				Retail, Restaurants and Services Industries					
I work for a Princeton area business	Tourism		Manufacturing and Industrial	Retail, Restaurants and Services Industries					

I work for a Princeton area business	Manufacturing and Industrial	Retail, Restaurants and Services Industries	Housing	
I work for a Princeton area business		Retail, Restaurants and Services Industries	Housing	
I work for a Princeton area business	Tourism		Housing	Private and Public Sector Relations
I work for a Princeton area business	Tourism	Retail, Restaurants and Services Industries	Housing	
I work for a Princeton area business	Manufacturing and Industrial	Retail, Restaurants and Services Industries	Housing	
I work for a Princeton area business	Manufacturing and Industrial		Transportation	Age Friendly
I live within the Princeton ISD#477 School District		Retail, Restaurants and Services Industries	Transportation	
I work for a Princeton area business		Retail, Restaurants and Services Industries	Housing	Private and Public Sector Relations

I work for
a
Princeton
area
business Tourism

Housing

I work for
a
Princeton
area
business
Manufacturing and Industrial

Retail,
Restaurants and
Services
Industries

Age
Friendly

I live
within the
Princeton
ISD#477
School
District Tourism

Retail,
Restaurants and
Services
Industries

I work for
a
Princeton
area
business
Retail,
Restaurants and
Services
Industries

I work for
a
Princeton
area
business
I live
within the
the City
of
Princeton
(non-
townships
)
I live
within the
the City
of
Princeton
(non-
townships
)

Retail,
Restaurants and
Services
Industries
Manufacturing and Industrial

Housing
Age
Friendly

Retail,
Restaurants and
Services
Industries

I live within the the City of Princeton (non-townships)

Manufacturing and Industrial Industries

Private and Public Sector Relations

I am a visitor

Retail, Restaurants and Services Industries

I work for a Princeton area business

Retail, Restaurants and Services Industries

I work for a Princeton area business

Manufacturing and Industrial Industries Transport ation

I work for a Princeton area business

Retail, Restaurants and Services Industries

Age Friendly

I work for a Princeton area business Tourism I live

Retail, Restaurants and Services Industries

Housing

within the the City of Princeton (non-townships)

Tourism

Manufacturing and Industrial Industries Retail, Restaurants and Services Industries

I work for
a
Princeton
area
business

Retail,
Restauran
ts and
Services
Industries

I work for
a
Princeton
area
business

Retail,
Restauran
ts and
Services
Industries

I work for
a
Princeton
area
business

Housing Age
Friendly

I work for
a
Princeton
area
business

Tourism

Manufact
uring and
Industrial
Services
Industries

I work for
a
Princeton
area
business

Housing

I work for
a
Princeton
area
business

Retail,
Restauran
ts and
Services
Industries

Age
Friendly

I work for
a
Princeton
area
business
I live
within the
the City
of
Princeton
(non-
townships
)

Tourism

Retail,
Restauran
ts and
Services
Industries

Age
Friendly

I am a visitor		Retail, Restaurants and Services Industries	
I live within the Princeton ISD#477 School District I live within the the City of Princeton (non-townships) I live within the the City of Princeton (non-townships)		Retail, Restaurants and Services Industries	Age Friendly
		Retail, Restaurants and Services Industries	Age Friendly
	Tourism	Manufacturing and Industrial Industries	
I live within the Princeton ISD#477 School District	Tourism		Age Friendly
			Housing
I live within the Princeton ISD#477 School District	Tourism	Retail, Restaurants and Services Industries	Age Friendly

I live within the Princeton ISD#477 School District
Tourism
Retail, Restaurants and Services Industries
Manufacturing and Industrial

I live within the Princeton ISD#477 School District
Tourism
I work for a Princeton area business
Transportation
Private and Public Sector Relations
Manufacturing and Industrial

Christ Our Light Church
Other (please specify)
Tourism
Retail, Restaurants and Services Industries
Manufacturing and Industrial

I live within the Princeton ISD#477 School District
Tourism
Retail, Restaurants and Services Industries
Manufacturing and Industrial

I live within the the City of Princeton (non-townships)
I live within the the City of Princeton (non-townships)
Tourism
Retail, Restaurants and Services Industries
Housing
Age Friendly
Housing

I live within the the City of Princeton (non-townships)

Manufacturing and Industrial Industries Retail, Restaurants and Services

Other (please specify) I live within the the City of Princeton (non-townships)

Tourism

Retail, Restaurants and Services Industries

Private and Public Sector Relations

I live within the the City of Princeton (non-townships)

Retail, Restaurants and Services Industries Transportation Housing

I live within the Princeton ISD#477 School District

Retail, Restaurants and Services Industries

I live within the Princeton ISD#477 School District

Age Friendly

I live within the Princeton ISD#477 School District

Manufacturing and Industrial Industries Retail, Restaurants and Services

Housing

I live within the Princeton ISD#477 School District
Retail, Restaurants and Services Industries
Housing

I work for a Princeton area business I live within the the City of Princeton (non-townships) I am a visitor
Tourism
Retail, Restaurants and Services Industries
Transportation
Tourism
Tourism

I live within the Princeton ISD#477 School District I live within the the City of Princeton (non-townships)
Retail, Restaurants and Services Industries
Age Friendly
Manufacturing and Industrial Industries
Tourism

I live within the Princeton ISD#477 School District
Retail, Restaurants and Services Industries

I live within the Princeton ISD#477 School District
Retail, Restaurants and Services Industries

Small town atmosphere
I live within the Princeton ISD#477 School District
Age Friendly

I live within the Princeton ISD#477 School District
Retail, Restaurants and Services Industries
Manufacturing and Industrial Industries
Age Friendly

I live within the the City of Princeton (non-townships)
Retail, Restaurants and Services Industries
Manufacturing and Industrial Industries

I live within the the City of Princeton (non-townships)
Retail, Restaurants and Services Industries
Private and Public Sector Relations

I live within the the City of Princeton (non-townships)
Retail, Restaurants and Services Industries

I work for a Princeton area business
Tourism
Manufacturing and Industrial
Retail, Restaurants and Services Industries

I live within the Princeton ISD#477 School District
Manufacturing and Industrial
Retail, Restaurants and Services Industries
Transportation

I am a visitor I work for a Princeton area business
Manufacturing and Industrial
Retail, Restaurants and Services Industries
Age Friendly
Private and Public Sector Relations

I am a visitor I live within the the City of Princeton (non-townships)
Tourism
Transportation
Age Friendly
Transportation Housing

I live within the Princeton ISD#477 School District
Manufacturing and Industrial
Retail, Restaurants and Services Industries
Private and Public Sector Relations

Princeton Alano Society	I live within the the City of Princeton (non- townships)	Retail, Restauran ts and Services Industries	Housing	Private and Public Sector Relations
-------------------------------	--	--	---------	---

I live within the Princeton ISD#477 School District	Retail, Restauran ts and Services Industries
--	--

Fairgroun ds, churches	I live within the Princeton ISD#477 School District	Retail, Restauran ts and Services Industries
------------------------------	--	--

I am a visitor	Tourism	Housing	Age Friendly
-------------------	---------	---------	-----------------

I work for a Princeton area business	Tourism	Retail, Restauran ts and Services Industries	Housing
--	---------	--	---------

I live within the Princeton ISD#477 School District	Tourism	Housing
--	---------	---------

I live within the Princeton ISD#477 School District	Tourism	Transport ation	Housing
--	---------	--------------------	---------

Other (please specify) Manufacturing and Industrial Industries Retail, Restaurants and Services Industries Age Friendly

I live within the Princeton ISD#477 School District I live within the the City of Princeton (non-townships) I live within the the City of Princeton (non-townships) Tourism Retail, Restaurants and Services Industries Transportation Age Friendly

Transportation Housing Age Friendly

I live within the Princeton ISD#477 School District I live within the the City of Princeton (non-townships) Tourism Retail, Restaurants and Services Industries Age Friendly

I live within the the City of Princeton (non-townships) Tourism Manufacturing and Industrial Industries Private and Public Sector Relations

I live within the the City of Princeton (non-townships) I work for a Princeton area business

Tourism

Manufacturing and Industrial

Manufacturing and Industrial

Housing

Transportation

Distance from cities (close but not too far)

I live within the Princeton ISD#477 School District I live within the the City of Princeton (non-townships)

Tourism

Retail, Restaurants and Services Industries

Private and Public Sector Relations

I live within the Princeton ISD#477 School District

Tourism

Retail, Restaurants and Services Industries

Age Friendly

I live within the Princeton ISD#477 School District

Retail, Restaurants and Services Industries

Transportation

Housing

I live within the Princeton ISD#477 School District

Manufacturing and Industrial

Retail, Restaurants and Services Industries

Housing

I live within the Princeton ISD#477 School District

Retail, Restaurants and Services Industries

Age Friendly

I work for a Princeton area business

Retail, Restaurants and Services Industries

I live within the Princeton ISD#477 School District

Tourism

Manufacturing and Industrial

I live within the the City of Princeton (non-townships)

Retail, Restaurants and Services Industries

I live within the Princeton ISD#477 School District

Retail, Restaurants and Services Industries

Housing Age Friendly

How much your basketball team sucke

Other (please specify)

Housing

I work for a Princeton area business

Retail, Restaurants and Services Industries

I live within the the City of Princeton (non-townships)

Retail, Restaurants and Services Industries

I live within the Princeton ISD#477 School District

Retail, Restaurants and Services Industries

Housing

I live within the Princeton ISD#477 School District

Tourism

Retail, Restaurants and Services Industries

Other (please specify) I work for a Princeton area business I live within the the City of Princeton (non-townships)

Retail, Restaurants and Services Industries

Transportation

Age Friendly

Private and Public Sector Relations

I live within the the City of Princeton (non-townships)

Retail, Restaurants and Services Industries

Age Friendly

Other (please specify)

Retail, Restaurants and Services Industries

I live within the Princeton ISD#477 School District		Retail, Restaurants and Services Industries	Housing	
I work for a Princeton area business		Retail, Restaurants and Services Industries		
I live within the Princeton ISD#477 School District	Tourism	Retail, Restaurants and Services Industries		
I live within the Princeton ISD#477 School District		Retail, Restaurants and Services Industries		
I live within the Princeton ISD#477 School District		Retail, Restaurants and Services Industries	Housing	Private and Public Sector Relations
I work for a Princeton area business		Retail, Restaurants and Services Industries		
I live within the Princeton ISD#477 School District	Tourism	Retail, Restaurants and Services Industries		Age Friendly

I live within the Princeton ISD#477 School District
Retail, Restaurants and Services Industries

I work for a Princeton area business
Retail, Restaurants and Services Industries

I live within the Princeton ISD#477 School District
Manufacturing and Industrial
Housing

I live within the Princeton ISD#477 School District
Retail, Restaurants and Services Industries
Transportation

I work for a Princeton area business
Retail, Restaurants and Services Industries

I live within the Princeton ISD#477 School District
Retail, Restaurants and Services Industries
Tourism

I live within the Princeton ISD#477 School District
Tourism
Private and Public Sector Relations

I work for
a
Princeton
area
business

Transport
ation

I work for
a
Princeton
area
business

Retail,
Restauran
ts and
Manufact
uring and
Industrial
Services
Industries

I work for
a
Princeton
area
business

Manufact
uring and
Industrial

Age
Friendly

I live
within the
Princeton
ISD#477
School
District

Retail,
Restauran
ts and
Services
Industries

Age
Friendly

Other
(please
specify)

Retail,
Restauran
ts and
Services
Industries
Transport
ation

Private
and
Public
Sector
Relations

I work for
a
Princeton
area
business
I work for
a
Princeton
area
business

Retail,
Restauran
ts and
Services
Industries

Age
Friendly

I live
within the
Princeton
ISD#477
School
District

Retail,
Restauran
ts and
Services
Industries

I live
within the
the City
of
Princeton
(non-
townships
)

Tourism

Transport
ation

Housing

I live
within the
the City
of
Princeton
(non-
townships
)

Retail,
Restauran
ts and
Manufact uring and Services
Industrial Industries

Transport
ation

Nothing

I live
within the
Princeton
ISD#477
School
District

Retail,
Restauran
ts and
Services
Industries

I work for
a
Princeton
area
business

Retail,
Restauran
ts and
Services
Industries

I live
within the
the City
of
Princeton
(non-
townships
)

Retail,
Restauran
ts and
Services
Industries

I live
within the
Princeton
ISD#477
School
District

Retail,
Restauran
ts and
Manufact uring and Services
Industrial Industries

Transport
ation

I live within the Princeton ISD#477 School District I live within the the City of Princeton (non-townships)

Retail, Restaurants and Services Industries

Age Friendly

I live within the the City of Princeton (non-townships)

Retail, Restaurants and Services Industries

Transportation

Age Friendly

I live within the Princeton ISD#477 School District I live within the the City of Princeton (non-townships)

Retail, Restaurants and Services Industries

Housing

I live within the the City of Princeton (non-townships)

Tourism

Manufacturing and Industrial

Private and Public Sector Relations

I work for a Princeton area business

Retail, Restaurants and Services Industries

I work for a Princeton area business I work for a Princeton area business

Retail, Restaurants and Services Industries

I work for a Princeton area business

Age Friendly

I work for
a
Princeton
area
business

Retail,
Restauran
ts and
Services
Industries

I live
within the
Princeton
ISD#477
School
District

Tourism

Retail,
Restauran
ts and
Services
Industries

I live
within the
the City
of
Princeton
(non-
townships
)

Tourism

Retail,
Restauran
ts and
Services
Industries

Age
Friendly

Other
(please
specify)

Retail,
Restauran
ts and
Services
Industries

I work for
a
Princeton
area
business

Retail,
Restauran
ts and
Services
Industries

I work for
a
Princeton
area
business

Tourism

I work for
a
Princeton
area
business

Retail,
Restauran
ts and
Services
Industries

Nature	I live within the Princeton ISD#477 School District	Retail, Restaurants and Services Industries	Housing	Age Friendly	
Nothing	Other (please specify)	Manufacturing and Industrial			Private and Public Sector Relations
	I work for a Princeton area business	Retail, Restaurants and Services Industries		Age Friendly	Private and Public Sector Relations
	I live within the Princeton ISD#477 School District	Retail, Restaurants and Services Industries			
	I live within the Princeton ISD#477 School District	Retail, Restaurants and Services Industries			
	I live within the the City of Princeton (non-townships)		Transportation	Age Friendly	Private and Public Sector Relations
	I work for a Princeton area business	Retail, Restaurants and Services Industries	Tourism		

I work for
a
Princeton
area
business

Age
Friendly

I work for
a
Princeton
area
business

Retail,
Restauran
ts and
Services
Industries

I live
within the
Princeton
ISD#477
School
District

Retail,
Restauran
ts and
Services
Industries

Age
Friendly

I work for
a
Princeton
area
business

Retail,
Restauran
ts and
Services
Industries

Housing

Age
Friendly

I live
within the
Princeton
ISD#477
School
District

Retail,
Restauran
ts and
Services
Industries

I live
within the
the City
of
Princeton
(non-
townships
)

Retail,
Restauran
ts and
Services
Industries
Manufact
uring and
Industrial

I live
within the
Princeton
ISD#477
School
District

Retail,
Restauran
ts and
Services
Industries

I live within the Princeton ISD#477 School District
Retail, Restaurants and Services Industries
Manufacturing and Industrial
Age Friendly

I work for a Princeton area business
Retail, Restaurants and Services Industries

I work for a Princeton area business
Retail, Restaurants and Services Industries
Age Friendly

I work for a Princeton area business
Retail, Restaurants and Services Industries

I work for a Princeton area business
Retail, Restaurants and Services Industries
Transportation Housing

I live within the Princeton ISD#477 School District
Retail, Restaurants and Services Industries
Transportation Housing

I live within the Princeton ISD#477 School District
Retail, Restaurants and Services Industries

I live
within the
Princeton
ISD#477
School
District

Retail,
Restauran
ts and
Services
Industries

I work for
a
Princeton
area
business

Retail,
Restauran
ts and
Services
Industries

I work for
a
Princeton
area
business

Retail,
Restauran
ts and
Services
Industries

Other
(please
specify)

Retail,
Restauran
ts and
Services
Industries
Transport
ation
Housing

I work for
a
Princeton
area
business
I live
within the
the City
of
Princeton
(non-
townships
)

Retail,
Restauran
ts and
Services
Industries

Retail,
Restauran
ts and
Services
Industries

I work for
a
Princeton
area
business
Tourism

Retail,
Restauran
ts and
Services
Industries

Housing

I work for a Princeton area business
Retail, Restaurants and Services Industries
Private and Public Sector Relations

I work for a Princeton area business
Retail, Restaurants and Services Industries
Transportation
Age Friendly

I live within the Princeton ISD#477 School District
Tourism
Retail, Restaurants and Services Industries

Aldis and Coborns
I am a visitor
Tourism
Retail, Restaurants and Services Industries

I work for a Princeton area business
Retail, Restaurants and Services Industries

I live within the the City of Princeton (non-townships)
Retail, Restaurants and Services Industries
Private and Public Sector Relations

I live within the Princeton ISD#477 School District
Retail, Restaurants and Services Industries
Housing

	I work for a Princeton area business		Retail, Restaurants and Services Industries	
	I work for a Princeton area business		Retail, Restaurants and Services Industries	
none	I work for a Princeton area business		Retail, Restaurants and Services Industries	
	I work for a Princeton area business	Tourism	Retail, Restaurants and Services Industries	Age Friendly
	I work for a Princeton area business		Retail, Restaurants and Services Industries	
	I live within the Princeton ISD#477 School District		Retail, Restaurants and Services Industries	Age Friendly Private and Public Sector Relations
	I work for a Princeton area business	Tourism	Retail, Restaurants and Services Industries	
	I work for a Princeton area business			Age Friendly
				Housing

Airport.	I live within the Princeton ISD#477 School District		Transportation	
Airport.	I live within the Princeton ISD#477 School District		Transportation	
Nothing listed.	(please specify) I am a visitor	Tourism		Age Friendly Age Friendly
Airport.	I am a visitor	Manufacturing and Industrial		Age Friendly
Airport.	I am a visitor		Transportation	
Airport.	I live within the the City of Princeton (non-townships)		Transportation	
Airport.	I am a visitor		Transportation	
Airport.	I live within the the City of Princeton (non-townships)		Transportation	
Airport.	I am a visitor		Transportation	
Airport.	I am a visitor		Transportation	

Airport	I am a visitor			Transportation
Airport	I live within the Princeton ISD#477 School District			Transportation
Airport	I live within the Princeton ISD#477 School District			Transportation
Airport	I live within the Princeton ISD#477 School District	Tourism	Retail, Restaurants and Services Industries	
Airport	I live within the Princeton ISD#477 School District		Retail, Restaurants and Services Industries	
Airport	I work for a Princeton area business		Manufacturing and Industrial	Age Friendly
	I live within the Princeton ISD#477 School District	Tourism		Private and Public Sector Relations

I live within the Princeton ISD#477 School District I live within the City of Princeton (non-townships) Tourism Retail, Restaurants and Services Industries Age Friendly

I live within the Princeton ISD#477 School District Retail, Restaurants and Services Industries Age Friendly

I live within the Princeton ISD#477 School District Retail, Restaurants and Services Industries

I live within the Princeton ISD#477 School District Private and Public Sector Relations

I live within the Princeton ISD#477 School District Tourism Manufacturing and Industrial Age Friendly

There are
good
people
who live
in the
Princeton
area

I live
within the
Princeton
ISD#477
School
District
I live

within the
the City
of
Princeton
(non-
townships
)

I work for
a
Princeton
area
business
I live

Tourism

within the
the City
of
Princeton
(non-
townships
)

I live
within the
Princeton
ISD#477
School
District
Tourism

I am a
visitor

Retail,
Restauran
ts and
Services
Manufact
uring and
Industrial
Industries

Retail,
Restauran
ts and
Services
Manufact
uring and
Industrial
Industries

Retail,
Restauran
ts and
Services
Industries
Tourism

Retail,
Restauran
ts and
Services
Manufact
uring and
Industrial
Industries

Retail,
Restauran
ts and
Services
Industries

Private
and
Public
Sector
Relations

Age
Friendly

Private
and
Public
Sector
Relations

Housing
Age
Friendly

I live
within the
the City
of
Princeton
(non-
townships
)

Tourism

I live
within the
the City
of
Princeton
(non-
townships
)

Retail,
Restauran
ts and
Services Transport
Industries ation Housing

I live
within the
Princeton
ISD#477
School
District

Tourism

I live
within the
the City
of
Princeton
(non-
townships
)

Retail,
Restauran
ts and
Services
Industries

I live
within the
Princeton
ISD#477
School
District

Tourism

I live
within the
the City
of
Princeton
(non-
townships
)

Retail,
Restauran
ts and
Services
Industries

Housing Age
Friendly

I am a
visitor

Tourism

Retail,
Restauran
ts and
Services
Industries

Housing Age
Friendly

I live within the Princeton ISD#477 School District
Retail, Restaurants and Services Industries

I live within the the City of Princeton (non-townships)
Manufacturing and Industrial

I live within the the City of Princeton (non-townships)
Retail, Restaurants and Services Industries

I live within the Princeton ISD#477 School District
Retail, Restaurants and Services Industries

Scenery and small population
I live within the Princeton ISD#477 School District
Tourism

I live within the Princeton ISD#477 School District
Retail, Restaurants and Services Industries

Small town, country living	Other (please specify)	Retail, Restaurants and Services Industries		
I live within the Princeton ISD#477 School District	I live within the the City of Princeton (non-townships)	Manufacturing and Industrial	Retail, Restaurants and Services Industries	Age Friendly
I live within the Princeton ISD#477 School District			Retail, Restaurants and Services Industries	Age Friendly
I live within the Princeton ISD#477 School District			Retail, Restaurants and Services Industries	Private and Public Sector Relations
I live within the Princeton ISD#477 School District	I live within the the City of Princeton (non-townships)		Retail, Restaurants and Services Industries	Age Friendly
			Retail, Restaurants and Services Industries	Housing

I live within the Princeton ISD#477 School District Tourism

Age Friendly

I live within the Princeton ISD#477 School District

Retail, Restaurants and Services Industries Manufacturing and Industrial

Housing

I live within the Princeton ISD#477 School District I work for a

Transportation

Lifestyle Tint

Princeton area business

Manufacturing and Industrial

I live within the Princeton ISD#477 School District I live

Retail, Restaurants and Services Industries

Housing

Private and Public Sector Relations

within the the City of Princeton (non-townships)

Retail, Restaurants and Services Industries

Housing

Private and Public Sector Relations

I live within the the City of Princeton (non-townships)

Retail, Restaurants and Services Industries

Age Friendly

I live within the the City of Princeton (non-townships)

Housing

Age Friendly

Private and Public Sector Relations

I live within the the City of Princeton (non-townships)

Tourism

Retail, Restaurants and Services Industries

Age Friendly

I live within the Princeton ISD#477 School District

Housing

I live within the Princeton ISD#477 School District

Tourism

Retail, Restaurants and Services Industries

I live within the Princeton ISD#477 School District

Tourism

Retail, Restaurants and Services Industries

I live within the the City of Princeton (non-townships)

Manufacturing and Industrial Industries Retail, Restaurants and Services

Private and Public Sector Relations

I live within the the City of Princeton (non-townships)

Manufacturing and Industrial Industries Retail, Restaurants and Services

Age Friendly

I live within the the City of Princeton (non-townships)

Retail, Restaurants and Services Industries

I live within the the City of Princeton (non-townships)

Age Friendly

Lifestyle Tint

I live within the the City of Princeton (non-townships)

Retail, Restaurants and Services Industries

I live within the the City of Princeton (non-townships)

Tourism

I live within the Princeton ISD#477 School District I work for a Princeton area business Tourism

Retail, Restaurants and Services Industries

Family there

Other (please specify)

Retail, Restaurants and Services Industries

Housing

I live within the Princeton ISD#477 School District

Retail, Restaurants and Services Industries

I live within the Princeton ISD#477 School District I live within the the City of Princeton (non-townships)

Manufacturing and Industrial

Retail, Restaurants and Services Industries

Housing

Age Friendly

I live within the the City of Princeton (non-townships)

Retail, Restaurants and Services Industries

I live within the the City of Princeton (non-townships)

Retail, Restaurants and Services Industries

Age Friendly

Twice New Thrift Store

I live within the Princeton ISD#477 School District I live within the

Retail, Restaurants and Services Industries

Private and Public Sector Relations

the City of Princeton (non-townships)

Tourism

Retail, Restaurants and Services Industries

Age Friendly

I live within the the City of Princeton (non-townships)

Retail, Restaurants and Services Industries

I live within the the City of Princeton (non-townships)

Manufacturing and Industrial Industries

Housing

Nothing really

I live within the Princeton ISD#477 School District

Retail, Restaurants and Services Industries

I live within the the City of Princeton (non-townships)

Retail, Restaurants and Services Industries

I live within the Princeton ISD#477 School District Tourism

Retail, Restaurants and Services Industries

I live within the Princeton ISD#477 School District

Manufacturing and Industrial

I live within the Princeton ISD#477 School District

Manufacturing and Industrial

Transportation Housing

I live within the the City of Princeton (non-townships)

Tourism

Retail, Restaurants and Services Industries

Housing

I live within the Princeton ISD#477 School District

Retail, Restaurants and Services Industries

Housing Age Friendly

	I live within the Princeton ISD#477 School District	Tourism	Retail, Restauran ts and Services Industries	Age Friendly
Its been home for 30+years	(non- townships)	Tourism	Retail, Restauran ts and Services Industries	Age Friendly
	I live within the Princeton ISD#477 School District		Retail, Restauran ts and Services Industries	Age Friendly
	within the the City of Princeton (non- townships)		Retail, Restauran ts and Services Industries	
	I live within the the City of Princeton (non- townships)		Retail, Restauran ts and Services Industries	
	I live within the Princeton ISD#477 School District	Tourism	Retail, Restauran ts and Services Industries	Age Friendly

I live within the the City of Princeton (non-townships)

Retail, Restaurants and Services Industries Transportation Housing

I live within the Princeton ISD#477 School District

Retail, Restaurants and Services Industries Age Friendly Private and Public Sector Relations

I work for a Princeton area business I live within the the City of Princeton (non-townships)

Retail, Restaurants and Services Industries Age Friendly

I live within the the City of Princeton (non-townships)

Manufacturing and Industrial Retail, Restaurants and Services Industries Transportation

Other (please specify)

Retail, Restaurants and Services Industries

Smaller feel yet better options than small towns in all areas

Other (please specify)

Retail, Restaurants and Services Industries Housing

I live within the Princeton ISD#477 School District		Retail, Restaurants and Services Industries	Transportation	Age Friendly
I live within the the City of Princeton (non-townships)	Tourism	Retail, Restaurants and Services Industries		Housing
I live within the the City of Princeton (non-townships)	Tourism	Retail, Restaurants and Services Industries		Housing
I live within the Princeton ISD#477 School District	Tourism	Retail, Restaurants and Services Industries		Private and Public Sector Relations
I live within the the City of Princeton (non-townships)		Retail, Restaurants and Services Industries		Housing Age Friendly
Other (please specify)	Manufacturing and Industrial	Retail, Restaurants and Services Industries		

I live
within the
the City
of
Princeton
(non-
townships
)

Transport
ation

I live
within the
Princeton
ISD#477
School
District

Retail,
Restauran
ts and
Services
Industries
Transport
ation
Housing

I live
within the
Princeton
ISD#477
School
District

Retail,
Restauran
ts and
Services
Industries

I live
within the
Princeton
ISD#477
School
District

Retail,
Restauran
ts and
Services
Industries

I work for
a
Princeton
area
business
I live
Tourism

Retail,
Restauran
ts and
Services
Industries
Transport
ation

within the
the City
of
Princeton
(non-
townships
)

Retail,
Restauran
ts and
Services
Industries

I live within the the City of Princeton (non-townships) Tourism

I live within the the City of Princeton (non-townships)

Manufacturing and Industrial Retail, Restaurants and Services Industries

Private and Public Sector Relations

Fair grounds

Other (please specify) I work for a Princeton area business

Manufacturing and Industrial Retail, Restaurants and Services Industries

Housing

I live within the Princeton ISD#477 School District

Retail, Restaurants and Services Industries Transportation

Age Friendly

Other (please specify)

Manufacturing and Industrial Retail, Restaurants and Services Industries

Age Friendly

Other (please specify)

Retail, Restaurants and Services Industries

	Other (please specify)	Manufact uring and Industrial		
	I live within the Princeton ISD#477 School District I live within the the City of Princeton (non- townships)	Manufact uring and Industrial	Retail, Restauran ts and Services Industries	
Nothing.				
	I live within the Princeton ISD#477 School District	Manufact uring and Industrial	Retail, Restauran ts and Services Industries	Housing
	I live within the Princeton ISD#477 School District	Manufact uring and Industrial	Retail, Restauran ts and Services Industries	Age Friendly
not sure				
	I live within the Princeton ISD#477 School District	Manufact uring and Industrial	Transport ation	Housing
	I live within the Princeton ISD#477 School District		Retail, Restauran ts and Services Industries	

I live within the Princeton ISD#477 School District Tourism Retail, Restaurants and Services Industries

I work for a Princeton area business Retail, Restaurants and Services Industries

I live within the Princeton ISD#477 School District Retail, Restaurants and Services Industries

I live within the Princeton ISD#477 School District Manufacturing and Industrial Industries Housing

Country lifestyle, no silly urban mandates . I live within the the City of Princeton (non-townships) I live within the the City of Princeton (non-townships) I work for a Princeton area business Retail, Restaurants and Services Industries Manufacturing and Industrial

Transportation Housing Age Friendly

	I live within the Princeton ISD#477 School District	Retail, Restaurants and Services Industries	
	I live within the the City of Princeton (non-townships)	Retail, Restaurants and Services Industries	
Walking trails ,by the dog park and north side river bottom trails	I live within the the City of Princeton (non-townships)	Manufacturing and Industrial	Age Friendly
	I live within the the City of Princeton (non-townships)	Manufacturing and Industrial	
	I live within the Princeton ISD#477 School District	Retail, Restaurants and Services Industries	
Family	Other (please specify)	Retail, Restaurants and Services Industries	Housing

	Other (please specify) I live within the the City of Princeton (non- townships)	Manufact uring and Industrial			Private and Public Sector Relations
	I live within the Princeton ISD#477 School District	Manufact uring and Industrial	Retail, Restauran ts and Services Industries	Housing	Private and Public Sector Relations
The people	I live within the Princeton ISD#477 School District	Manufact uring and Industrial	Retail, Restauran ts and Services Industries		Private and Public Sector Relations
	I live within the Princeton ISD#477 School District	Manufact uring and Industrial	Retail, Restauran ts and Services Industries		
	I live within the Princeton ISD#477 School District	Manufact uring and Industrial	Retail, Restauran ts and Services Industries	Age Friendly	
	Other (please specify)		Retail, Restauran ts and Services Industries	Age Friendly	Private and Public Sector Relations

	I work for a Princeton area business	Tourism		Retail, Restaurants and Services Industries		Private and Public Sector Relations
	I live within the Princeton ISD#477 School District I live within the the City of Princeton (non-townships)			Retail, Restaurants and Services Industries		Private and Public Sector Relations
	I live within the Princeton ISD#477 School District I live within the the City of Princeton (non-townships)			Retail, Restaurants and Services Industries		Private and Public Sector Relations
Nothing	I live within the Princeton ISD#477 School District I live within the the City of Princeton (non-townships)	Tourism	Manufacturing and Industrial	Retail, Restaurants and Services Industries		Private and Public Sector Relations
beyond that Princeton doesn't offer much - lacking retail for sure	I live within the the City of Princeton (non-townships)		Manufacturing and Industrial	Retail, Restaurants and Services Industries	Transportation	Age Friendly
					Housing	Age Friendly

	I live within the the City of Princeton (non-townships) Other (please specify) Other (please specify)	Tourism	Manufacturing and Industrial	Retail, Restaurants and Services Industries			Age Friendly	
Family					Housing			
	I live within the Princeton ISD#477 School District	Tourism						
	I live within the Princeton ISD#477 School District	Tourism		Retail, Restaurants and Services Industries	Housing			
	I live within the the City of Princeton (non-townships)		Manufacturing and Industrial		Housing	Age Friendly	Age	
Don't	I live		Manufacturing and Industrial	Retail,	Transport	Housing		
Nothing	I live		Manufacturing and Industrial	Retail,		Housing		
friendly	I live		Manufacturing and Industrial	Retail,		Housing		
	I live	Tourism				Housing		
	I live		Manufacturing and Industrial	Retail,			Age	
	I live		Manufacturing and Industrial	Retail,			Age	
	I live		Manufacturing and Industrial	Retail,			Age	
	I work for	Tourism						Private
	I live			Retail,		Housing		
	I live			Retail,		Housing	Age	
	I live					Housing		
	I live	Tourism	Manufacturing and Industrial				Age	
	I live	Tourism						
	I live			Retail,				

	I live		Manufact	Retail,	Housing		
	I live			Retail,			
	I live		Tourism	Retail,	Housing		
	I live				Housing	Age	
	I live				Housing	Age	
	I live	Tourism		Retail,	Housing		
	I live		Manufact				
	I live					Age	
	I live		Manufact	Retail,	Housing		
	I live		Manufact	Retail,	Housing		
	I live			Retail,			
	I live		Manufact	Retail,	Housing		
	Other	Sherburt		Retail,			
	I live			Retail,		Age	Private
	I live			Retail,	Housing	Age	
Church	I live		Tourism	Manufact	Housing		
	I live				Housing	Age	
No	I live		Tourism	Manufact			
	I live		Manufact	Retail,	Housing		
	I live			Retail,		Age	
	I live				Housing		
	I live		Manufact				
	I live		Manufact	Retail,	Housing		
	I live			Retail,	Housing	Age	
	I live				Housing	Age	
	I live						
	I live	Tourism		Retail,		Age	
	I live		Manufact	Retail,		Age	
	I work for			Retail,	Housing	Age	
	I live		Tourism		Housing		
	I live			Retail,			
	I live					Age	
	I live	Tourism		Retail,	Housing		
	I am a		Manufact	Retail,	Housing		

**What is
your age?**

19-29

40-49

30-39

60-69

50-59

40-49

40-49

19-29

30-39

19-29

50-59

40-49

30-39

40-49

50-59

50-59

40-49

40-49

50-59

50-59

30-39

70-79

18 and
under

60-69

50-59

40-49

19-29

19-29

50-59

50-59

60-69

60-69

30-39

40-49

50-59

18 and
under

18 and
under

18 and
under

18 and
under

19-29

18 and
under

18 and
under

30-39

19-29

30-39

40-49

50-59

70-79

50-59

30-39

40-49

40-49

40-49

30-39

50-59

40-49

19-29

30-39

30-39

50-59

40-49

50-59

30-39

30-39

40-49

40-49

70-79

40-49

19-29

60-69

50-59

40-49

19-29

60-69

40-49

50-59

60-69

50-59

30-39

19-29

19-29

50-59

30-39

30-39

50-59

60-69

50-59

30-39

30-39

50-59

19-29

70-79

19-29

60-69

40-49

30-39

50-59

30-39

30-39

18 and
under

40-49

60-69

60-69

19-29

30-39

50-59

19-29

19-29

40-49

50-59

40-49

50-59

50-59

30-39

40-49

19-29

40-49

40-49

50-59

40-49

50-59

19-29

30-39

50-59

30-39

50-59

60-69

60-69

30-39

30-39

30-39

40-49

40-49

40-49

60-69

50-59

19-29

30-39

70-79

30-39

50-59

60-69

19-29

50-59

40-49

30-39

19-29

60-69

40-49

50-59

30-39

40-49

40-49

40-49

50-59

50-59

19-29

19-29

30-39

30-39

40-49

40-49

60-69

50-59

30-39

40-49

60-69

30-39

50-59

40-49

40-49

30-39

40-49

40-49

40-49

19-29

19-29

40-49

50-59

40-49

40-49

50-59

40-49

40-49

40-49

30-39

30-39

50-59

40-49

30-39

40-49

30-39

30-39

18 and
under

18 and
under
18 and
under

30-39
18 and
under

18 and
under
18 and
under

18 and
under
18 and
under
18 and
under

18 and
under

18 and
under

18 and
under

18 and
under

60-69

60-69

40-49

19-29

18 and
under

60-69

30-39

18 and
under

40-49

40-49

60-69

50-59

60-69

50-59

70-79

30-39

50-59

60-69

70-79

30-39

60-69

40-49

30-39

50-59

60-69

40-49

19-29

30-39

40-49

40-49

50-59

30-39

50-59

40-49

30-39

30-39

50-59

40-49

30-39

40-49

60-69

40-49

40-49

60-69

30-39

30-39

30-39

50-59

40-49

19-29

60-69

30-39

40-49

40-49

30-39

50-59

30-39

40-49

19-29

19-29

30-39

60-69

19-29

60-69

40-49

40-49

19-29

19-29

50-59

70-79

40-49

19-29

30-39

30-39

30-39

30-39

60-69

30-39

50-59

30-39

40-49

30-39

30-39

30-39

30-39

50-59

40-49

40-49

60-69

70-79

50-59

50-59

40-49

50-59

30-39

60-69

50-59

60-69

50-59

50-59

60-69

50-59

60-69

50-59

40-49

50-59

60-69

60-69

60-69

30-39

40-49

19-29

40-49

40-49

50-59

60-69

30-39

40-49

50-59

60-69

30-39

30-39

60-69

19-29

50-59

50-59

40-49

40-49

60-69

60-69

19-29

40-49

30-39

50-59

50-59

80 and
over

50-59

30-39

50-59

40-49

50-59
30-39
80 and
70-79
70-79
60-69
70-79
60-69
50-59
19-29
50-59
50-59
80 and
80 and
80 and
18 and
18 and
19-29
60-69

70-79
60-69
60-69
80 and
70-79
60-69
80 and
80 and
70-79
70-79
80 and
80 and
80 and
80 and
80 and
70-79
80 and
80 and
80 and
70-79
80 and
70-79
80 and
18 and
19-29
19-29
18 and
30-39
30-39
60-69
50-59

Comment**Count Age****Open-Ended Response**

- 1 40-49 I am within the Princeton School district but hate how so many people on the Princeton Facebook page post racist comments. They also ridicule anyone who speaks against their political opinions. My husband and I lived in Princeton and our taxes were high but we did not see where the money went.
- 1 40-49 #3 should have SCHOOLS. great education will attract more and more young families and improve community morale. lets take care of the kids and secure a great tax base
- 1 19-29 Add more recreational outdoor activity spots. I think this would increase the moral of town and help bring a little color to all of our lives. Most of the workforce is constantly working and doesn't have the time to go out of town for the weekend to relax and shut they're minds off. If there was a place in town (or near) that would resolve the issue.
- 1 60-69 Affordable senior housing. Our population is aging
- 1 60-69 also need more housing for disabled mobility challenged people.
- 1 50-59 Back the Blue !
- 1 19-29 Being able to get the community more activities that are age appropriate, (ie.. teens to small children) something productive to do would be beneficial for everyone and will help with more foot traffic
- 1 19-29 Bring in better restaurants!! And shops
- 1 19-29 Build a community health/recreation center
- 1 19-29 Chipotle please
- 18 and
- 1 under City invest to be less reliable on government.
- 1 70-79 City streets need lots of work !!!!!
- 1 50-59 continue updating/improving park system
- 1 50-59 could use more family oriented activity centers/family outing things to do---batting cages, etc
- Enforcement of city ordinances by the Princeton Police Department
- 1 40-49 are beyond pathetic!
- 1 50-59 fix up More Parks

- Fix up the parks especially Mark Park. I remember when that was a great park and a busy place especially during the rum river festival. It is nowhere near the level now.
- 1 40-49 18 and
1 under Get a good basketball team
- 1 40-49 Get more retail stores
1 30-39 Go Tigers!
1 30-39 Great job

- Grew up in Princeton. Needs to keep it's small town charms, mom & pop stores, good food while increasing outside traffic to sustain them.
- 1 40-49 AFFORDABLE housing/rent opportunities for residential & business. Have to the rv park with discounts for veterans and allow monthly stays
1 40-49 I also think that there should be something to help the homeless teenagers.
1 60-69

- I feel that the older population is being TOTALLY left out of affordable housing. A majority CANNOT afford a 250,000 one-level home. Section 8 housing along with market value apartments we have enough of. Also wondering what kind of supervision that residents of Belle Haven and the residential treatments residents have?
- 1 60-69

- I grew up in Princeton and recently moved back, in happy to see more businesses come in and flourish here, hoping to see more!
- 1 30-39

- I have lived in Princeton all my life. I have seen it grow in population but not so much in businesses. I would like to see the taxes go DOWN. Property taxes are a terrible joke on us. Is that why we can't get businesses to come here? We need to make it attractive to come to Princeton. I love the Christmas decor and flower boxes, the blooming apple trees on main street. They take care of the streets pretty well. I like Princeton overall. Other than property taxes, it's a good place to live.
- 1 60-69

I have lived in the city of Princeton for over 30 years and continue to be very disappointed in the lack of new businesses. I don't know if it is due to the HIGH Mille Lacs taxes or the lack of incentives offered by the city but very unfortunate that almost every new business that comes to Princeton locate on the Sherburne County side of Princeton.

1 60-69

I wish there was a target, chipotle and other restaurants near the Walmart side of town. A minute clinic would be nice as the closest one is Cambridge. More summer kids activates or sports. I have 2 kids under 4 and not a lot of sports or activates are run that a working mom can get to. All ECFC classes are during the day. Swim lessons

1 30-39

I wish they could help out by Walmart and not have such HIGH property taxes so lots would sell and develop out there!

1 60-69

I would like to see more dark sky addressed. Stop with the blazing lights and consider other options. We can still be safe. I was on a Bennett Colorado board, decades ago, and we were moving toward this type of lighting

1 60-69

I would love to see Princeton do more to encourage more retail shopping & food in the downtown area. There are too many businesses in downtown that don't pull in retail customers which makes it hard for the others to survive. Princeton use to have a wonderful thriving downtown but not so much anymore.

1 50-59

Improve dog park. Lighting, landscaping

1 60-69

Invest in agriculture. Need more transparency especially regarding the schools in the district.

1 19-29

18 and
1 under Invest in airport.

18 and
1 under Invest in airport.

18 and
1 under Invest in airport.

18 and
1 under Invest in airport.

18 and
1 under Invest in airport.

18 and
1 under Invest in airport.

18 and
1 under Invest in airport.

- 18 and
1 under Invest in airport.
18 and
1 under Invest in airport.
18 and
1 under Invest in airport.
18 and
1 under Invest in airport.
18 and
1 under Invest in airport.
1 60-69 Invest in airport.
Invest in runway at the airport; lighted walk paths; indoor heated
1 60-69 pool.
1 40-49 Invest in walk paths with lighting.
- It seems like in the past 15-20 years the city has been
underprepared/didn't get firm commitments from private entities
before taking public sector action that didn't help projects come to
1 50-59 fruition.
- It would be great if they could bring back the drive through mail drop
box again. It is hard to try to mail a letter when you have to actually
get out of your car, especially in the winter. It is dangerous. Thank
1 60-69 you.
1 40-49 Keep it small.
- Lifestyle tint brings in so much new traffic to Princeton. Theyâ€™re
1 30-39 amazing at customer service and a true delight to have in Princeton
1 30-39 Lifestyle Tint Rules!
- 1 70-79 Love living in Princeton - Very friendly & family oriented!
- Love Princeton; Lived here over 40+ years; Worked in Princeton!
Schools/Community working together! A great place to raise our
1 70-79 boys!!
Love this community and would be very happy to see new and existing
1 60-69 businesses thrive here!
Love this town! moving into town Erickson estates best choice I ever
1 50-59 made!
Make sure there are places of community geared toward people from
1 30-39 birth to elderly
- Making the intersection more lanes or a turn lane coming out of
1 40-49 northland drive by the McDonalds
- 1 40-49 More chain restaurants and stores!! Enough pizza and grocery already.

More restaurant selection would be great! Especially something along the lines of a Panera or Firehouse/Jersey Mikes. Better grocery options would also be nice. I love Coburns, but would like to see

1 19-29 Walmart replaced/competing with something like a Target or Hyvee

1 40-49 More variety of new restaurants

1 50-59 more work on the roads and potholes.

Need MORE Big Name Restaurants- Olive Garden, Applebee's, TGI

1 50-59 Fri's, or others

1 19-29 Need more businesses in town and more commercial building sites.

need more of a draw for Princeton residents, better, upscaled business, restaurants-there will be a huge change in the coming years to the highway portal going north, this town needs to get updated!!

1 50-59

1 40-49 Need stuff for kids to do

1 40-49 No more new neighborhoods are needed

1 40-49 Panera bread

1 30-39 Parks and recreation, should be a high priority

Please focus on getting more for kids! Gyms (that allows younger kids), an outdoor pool, anything that will help keep them here and busy. You can't focus all the attention on the older aged people.

1 30-39

Please invest in downtown Princeton to make it appealing to both residents and potential businesses.

1 50-59

Please, for the love, invest in better snow removal necessities. Other than that, we need to draw people in - we can't appeal to lake folk really, so what will bring people in? That's rhetorical, I'm not sure I have the answer.

1 30-39

Princeton bulletin board and facebook pages alike are so negative and such a distasteful representation of our town. Born and raised in Princeton, it's disappointing. Our community should be represented in a more positive manner & encouraged to come together not argue over our small businesses and restaurants.

1 30-39

Princeton has a few good restaurants but most lack quality food. Our sense of community would be better if we had more events to bring everyone together. Adults need to feel a sense of community to make the town better. It seems like most people have to leave town to eat or socialize which takes away from our local community. I suppose that is a drawback of a small town, we can only offer what people are willing to invest in town. More people who want to make Princeton "their" hometown will show up as they promote and invest here. We don't really have that sense of pride and ownership in Princeton. I'm not sure how you get it, I'm sure it takes money, patience and dedication. Also a willingness for companies/people to want to invest in town and make it their own.

1 50-59

Princeton has a horrible reputation for drugs and the people are not known to be very friendly.

1 50-59

Princeton is a great community with many things to offer. We need to work on re-energizing the downtown retail community and how to draw customers downtown.

1 40-49

Princeton is a great place to live!

1 50-59

Princeton is a small town community that used to be a destination and our money should be spent preserving the history and bringing back old sights instead of tearing down trees and digging up fields for more housing I personally don't want developments or town home communities or apartments complexes ruining this city we are a small town.... a country town... and a community the bigger we build the more we lose

1 30-39

Princeton needs to grow. We need more area.

1 40-49

Princeton NEEDS to invest in quality activities for youth ages 12-17 to participate in. ie.. skate park, park and rec programs

1 50-59

Princeton needs to work harder at buildin the community. Building a Community Center needs to be top priority. This would improve the quality of life for our families.

1 60-69

Princeton needs walking trails, given the large amount of people who live outside of town Princeton needs walking/biking/running trails that are accessible by car or foot. More investment in small business, to fill the open spaces downtown. Allow for more restaurants, even if that means city ordinances need to change to allow for more liquor

1 30-39 licenses.

1 30-39 residents seem very politically hostile- even just in stores, gas stations

1 30-39 School district sucks

1 50-59 TacoBell...Culvers...Menards...FleetFarm...

Take the splash pad fence down. Allow it to be a free attraction - like

1 19-29 many other cities in MN.

The city should invest more funds towards parks and trails. In order to attract younger families there needs to be more retail options and entertainment options. The brewery opening in the spring is going to

1 30-39 be a great start to this.

The city should work with Sherburne and Mille Lacs counties to get the bike trail from Zimmerman and further north. This would bring people to Princeton but it would also hold people here who go elsewhere to enjoy that sort of activity. Good for restaurants and

1 60-69 retail.

1 70-79 The downtown needs a 'facelift'

The north end of town is pretty neglected. No sidewalks .roads are all patchy. Some due to the county but still in your city and seems like all the businesses are moving to Sherburne County side so maybe you should look into why that is. Thank you that is all for now.

1 30-39

1 40-49 The Princeton Area Chamber of Commerce is amazing!

The Princeton Public School will keep good families away. We need to set up good private Christian Schools or our Children and our future is at stake. Could use a good family restaurant as well.

1 60-69

The School District and facilities need to be improved in order to attract more people to move here. There is a large competitive school district that is located near by that offers better programs, and people are moving there instead.

1 19-29

1 60-69 There are NO decent 55+ apts/housing. Seems that section 8 and market values Apts are catered to. That along with treatment housing in residential areas.

1 50-59 There is no where to shop or eat in Princeton! We need more big box stores for shopping and better restaurants that are not fast food!

1 60-69 This is a community with virtually little for job opportunities, waning tax base and very little draw for ANY economic activity - it is a bedroom community with little future growth potential, today!
80 and This town needs to upgrade their sewer systems and improve their
1 over streets.

1 40-49 We need a community center with a public pool or water park for the community and to boost tourism.

1 19-29 We need better food options.

1 30-39 We NEED more places to eat that's not pizza or burger joints. We lose money as a community because people have to travel to eat. Since they're already eating some where else they spend their money shopping near where they eat. We NEED kid friendly places. Bring a theater back, maybe a grand slam, arcades? We are surrounded by growing communities, we need to grow too

1 60-69 We need more restaurants that stay open past 2pm

1 40-49 We need more retail!!

1 40-49 we need more seat down restaurants and less gas stations

1 40-49 We need restaurants & shopping for sure

We need things in this town for the young people. Better housing and
1 50-59 apartments.

1 40-49 we only have the "same kind" of restaurants here. There isn't a nice place to go. We have far too many pizza shops and parts stores.

While Princeton is a great place to live it could use some attention in the following areas. We must invest in infrastructure upgrades to make us competitive with other "high end" communities. Streets, sidewalks, stormsewer, sanitary mains, watermains, streetlighting to be particular. Beg, borrow or steal (TAX) all the money you can to get

1 60-69 it done.

Work at bringing retail and industry instead of taxing them so high

1 60-69 that they stay away.

Would love to see more care put into the downtown area to make it more friendly for retail tenets to bring the city back to life, as well as more attention to our parks and recreation for our kids

1 30-39

Would love to see more development of non-franchise restaurants and shops, and recreation for all ages.

1 30-39

Community center is needed in this town. Kids need an outlet.

1 30-39

FAVORITE: There is not much in Princeton as a drawing crowd. I was born and raised here. However was gone 50 years and am back.

Things are not any better after 50 years. The main street road block for businesses. Thanks to our police who said "don't change the road".

OTHER COMMENTS: The rent is becoming too high for 55+ citizens.

Crystal Court have raised rent and it is no longer affordable for 50+ citizens. Rent has gone up all over Princeton. That is NOT age-friendly.

There needs to be 2 salaries to pay for rent here. There is not many

80 and places for 55+ citizen thats affordable anymore. The salaries aren't keeping up with living and housing.

1 over

Fix the streets.

1 70-79

For people who don't have internet/smart phones a much better way to communicate. Informal people of church; school; community event in Zimmerman, Milaca, Long Siding, Pease, maybe an events column in

1 70-79 the Town & Country Shopper for free.

Housing and more for seniors. Teen Center for kids to go to instead of the street.

1 60-69

Housing for seniors and a teen center.

1 70-79

I like small town.

1 60-69

We need a community center/teen center.

1 50-59

We really need a teen center.

1 19-29

**Strategic Planning
Categories**

**Strategic Planning
Categories**

**Strategic Planning
Categories**

Other

Age Friendly

Tourism

Housing

Age Friendly

Housing

Other

Tourism

Retail, Restaurants and
Service Industries

Age Friendly

Retail, Restaurants and
Service Industries

Private and Public Sector

Relations

Transportation

Tourism

Age Friendly

Private and Public Sector

Relations

Tourism

Tourism

Age Friendly
Retail, Restaurants and
Service Industries
Tourism
Other

Tourism
Private and Public Sector
Relations

Retail, Restaurants and
Service Industries

Housing

Age Friendly

Housing

Age Friendly

Retail, Restaurants and
Service Industries

Retail, Restaurants and
Service Industries

Private and Public
Sector Relations

Retail, Restaurants and
Service Industries

Retail, Restaurants and
Service Industries Age Friendly

Retail, Restaurants and
Service Industries

Other

Retail, Restaurants and
Service Industries
Tourism
Manufacturing and
Industrial Age Friendly

Transportation

Transportation

Transportation

Transportation

Transportation

Transportation

Transportation

Transportation

Transportation

Transportation

Transportation

Transportation

Transportation

Transportation

Transportation

Private and Public Sector
Relations

Other

Other

Tourism

Tourism

Age Friendly

Other

Retail, Restaurants and
Service Industries

Housing

Age Friendly

Transportation

Retail, Restaurants and
Service Industries

Retail, Restaurants and
Service Industries
Retail, Restaurants and
Service Industries
Transportation
Retail, Restaurants and
Service Industries
Retail, Restaurants and
Service Industries

Retail, Restaurants and
Service Industries Transportation
Age Friendly
Housing
Retail, Restaurants and
Service Industries
Tourism

Age Friendly

Retail, Restaurants and
Service Industries

Manufacturing and
Industrial

Retail, Restaurants and
Service Industries

Tourism Retail, Restaurants and
 Service Industries Age Friendly

Other

Retail, Restaurants and
Service Industries
Other

Housing
Tourism

Housing

Age Friendly

Age Friendly

Tourism Retail, Restaurants and Service Industries

Other
Other
Retail, Restaurants and Service Industries

Age Friendly

Tourism Retail, Restaurants and Service Industries

Tourism Retail, Restaurants and Service Industries
Retail, Restaurants and Service Industries

Retail, Restaurants and Service Industries
Private and Public Sector Relations

Age Friendly

Age Friendly

Age Friendly

Housing

Retail, Restaurants and
Service Industries

Retail, Restaurants and
Service Industries

Housing

Age Friendly
Retail, Restaurants and
Service Industries

Tourism

Retail, Restaurants and
Service Industries
Retail, Restaurants and
Service Industries
Retail, Restaurants and
Service Industries
Retail, Restaurants and
Service Industries
Retail, Restaurants and
Service Industries

Age Friendly

Housing

Age Friendly

Retail, Restaurants and
Service Industries

Housing
Retail, Restaurants and
Service Industries

Age Friendly
Manufacturing and
Industrial

Retail, Restaurants and
Service Industries

Age Friendly

Retail, Restaurants and
Service Industries
Age Friendly

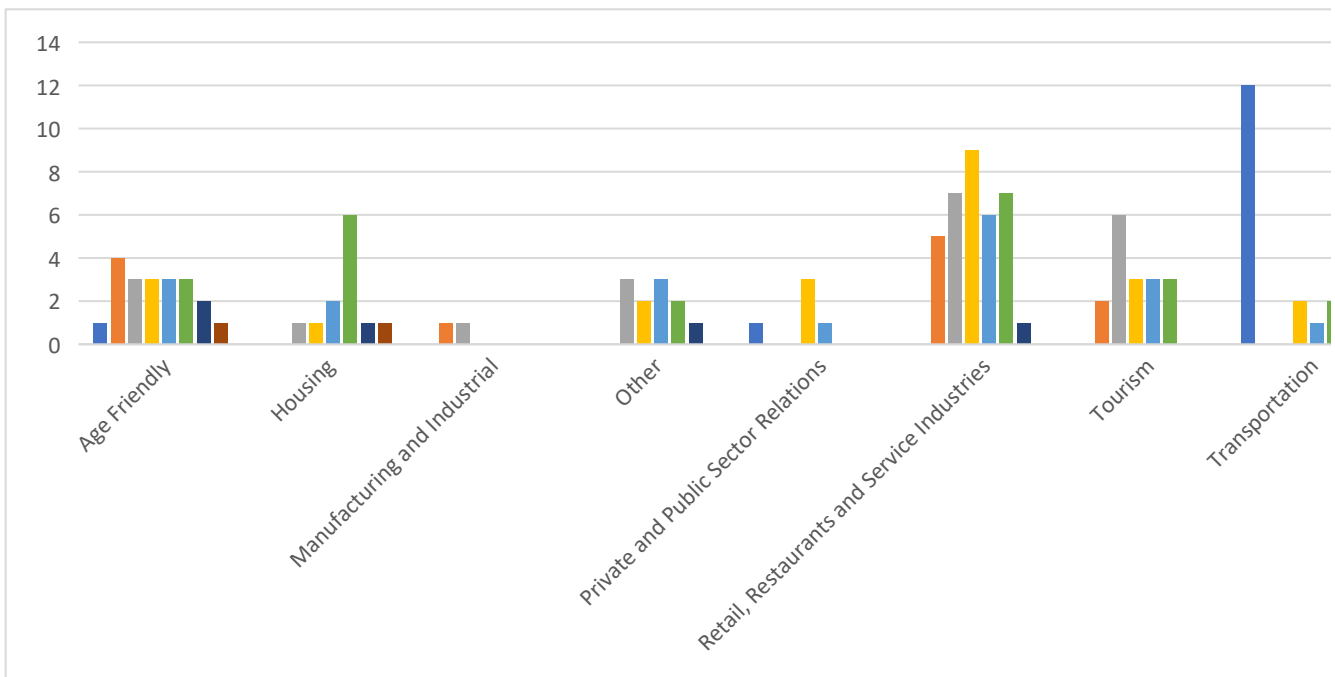
Age Friendly
Transportation

Age Friendly

Housing
Housing
Tourism
Age Friendly
Age Friendly

Age Friendly
Age Friendly

Sum of Comment Count Row Labels	Column Labels							
	18 and under	19-29	30-39	40-49	50-59	60-69	70-79	80 and over
Age Friendly	1	4	3	3	3	3	2	1
Housing			1	1	2	6	1	1
Manufacturing and Industrial		1	1					
Other			3	2	3	2	1	
Private and Public Sector Relations	1			3	1			
Retail, Restaurants and Service Industries		5	7	9	6	7	1	
Tourism		2	6	3	3	3		
Transportation	12			2	1	2	2	
Grand Total	14	12	21	23	19	23	7	2



Sum of Comment Count Row Labels	Column Labels							
	18 and under	19-29	30-39	40-49	50-59	60-69	70-79	80 and over
Age Friendly	1	4	3	3	3	3	2	1

#3 should have SCHOOLS. great education will attract more and more young families and improve community morale. lets take care of the kids and secure a great tax base
 Build a community health/recreation center

1
 1

could use more family oriented activity centers/family outing things to do--- batting cages, etc			1
Get a good basketball team	1		
Love living in Princeton - Very friendly & family oriented!			1
Make sure there are places of community geared toward people from birth to elderly		1	
Need stuff for kids to do		1	
Please focus on getting more for kids! Gyms (that allows younger kids), an outdoor pool, anything that will help keep them here and busy. You can't focus all the attention on the older aged people.		1	
Princeton NEEDS to invest in quality activities for youth ages 12-17 to participate in. ie.. skate park, park and rec programs			1
Princeton needs to work harder at buildin the community. Building a Community Center needs to be top priority. This would improve the quality of life for our families.			1
Take the splash pad fence down. Allow it to be a free attraction - like many other cities in MN.	1		
The Princeton Public School will keep good families away. We need to set up good private Christian Schools or our Children and our future is at stake. Could use a good family restaurant as well.			1
The School District and facilities need to be improved in order to attract more people to move here. There is a large competitive school district that is located near by that offers better programs, and people are moving there instead.	1		
There are NO decent 55+ apts/housing. Seems that section 8 and market values Apts are catered to. That along with treatment housing in residential areas.			1

We need a community center with a public pool or water park for the community and to boost tourism. Community center is needed in this town. Kids need an outlet.

1

1

FAVORITE: There is not much in Princeton as a drawing crowd. I was born and raised here. However was gone 50 years and am back. Things are not any better after 50 years. The main street road block for businesses. Thanks to our police who said "don't change the road". OTHER COMMENTS: The rent is becoming too high for 55+ citizens. Crystal Court have raised rent and it is no longer affordable for 50+ citizens. Rent has gone up all over Princeton. That is NOT age-friendly. There needs to be 2 salaries to pay for rent here. There is not many places for 55+ citizen thats affordable anymore. The salaries aren't keeping up with living and housing.

1

For people who don't have internet/smart phones a much better way to communicate. Informal people of church; school; community event in Zimmerman, Milaca, Long Siding, Pease, maybe an events column in the Town & Country Shopper for free.

1

We need a community center/teen center.

1

We really need a teen center.

1

Housing

1 1 2 6 1 1

Affordable senior housing. Our population is aging also need more housing for disabled mobility challenged people. I also think that there should be something to help the homeless teenagers.

1

1

1

<p>I feel that the older population is being TOTALLY left out of affordable housing. A majority CANNOT afford a 250,000 one-level home. Section 8 housing along with market value apartments we have enough of. Also wondering what kind of supervision that residents of Belle Haven and the residential treatments residents have?</p>	1		
<p>Love this town! moving into town Erickson estates best choice I ever made!</p>	1		
<p>No more new neighborhoods are needed</p>	1		
<p>Princeton is a small town community that used to be a destination and our money should be spent preserving the history and bringing back old sights instead of tearing down trees and digging up fields for more housing I personally don't want developments or town home communities or apartments complexes ruining this city we are a small town.... a country town... and a community the bigger we build the more we lose</p>	1		
<p>This town needs to upgrade their sewer systems and improve their streets.</p>	1		
<p>We need things in this town for the young people. Better housing and apartments.</p>	1		
<p>While Princeton is a great place to live it could use some attention in the following areas. We must invest in infrastructure upgrades to make us competitive with other "high end" communities. Streets, sidewalks, stormsewer, sanitary mains, watermains, streetlighting to be particular. Beg, borrow or steal (TAX) all the money you can to get it done.</p>	1		
<p>Housing and more for seniors. Teen Center for kids to go to instead of the street.</p>	1		
<p>Housing for seniors and a teen center.</p>	1		
<p>Manufacturing and Industrial</p>	1	1	

Invest in agriculture. Need more transparency especially regarding the schools in the district.	1					
Please, for the love, invest in better snow removal necessities. Other than that, we need to draw people in - we can't appeal to lake folk really, so what will bring people in? That's rhetorical, I'm not sure I have the answer.		1				
Other		3	2	3	2	1
I am within the Princeton School district but hate how so many people on the Princeton Facebook page post racist comments. They also ridicule anyone who speaks against their political opinions. My husband and I lived in Princeton and our taxes were high but we did not see where the money went.			1			
Back the Blue !				1		
Great job	1					
I would like to see more dark sky addressed. Stop with the blazing lights and consider other options. We can still be safe. I was on a Bennett Colorado board, decades ago, and we were moving toward this type of lighting					1	
It would be great if they could bring back the drive through mail drop box again. It is hard to try to mail a letter when you have to actually get out of your car, especially in the winter. It is dangerous.					1	
Thank you.						
Keep it small.			1			
Love Princeton; Lived here over 40+ years; Worked in Princeton!						1
Schools/Community working together! A great place to raise our boys!!						
Princeton has a horrible reputation for drugs and the people are not known to be very friendly.				1		
Princeton is a great place to live!				1		
residents seem very politically hostile- even just in stores, gas stations	1					
School district sucks	1					
Private and Public Sector Relations	1		3	1		

City invest to be less reliable on government.	1						
Enforcement of city ordinances by the Princeton Police Department are beyond pathetic!				1			
Have to the rv park with discounts for veterans and allow monthly stays				1			
It seems like in the past 15-20 years the city has been underprepared/didn't get firm commitments from private entities before taking public sector action that didn't help projects come to fruition.						1	
The Princeton Area Chamber of Commerce is amazing!				1			
Retail, Restaurants and Service Industries	5	7	9	6	7	1	
Bring in better restaurants!! And shops	1						
Chipotle please	1						
Get more retail stores			1				
I grew up in Princeton and recently moved back, in happy to see more businesses come in and flourish here, hoping to see more!		1					
I have lived in Princeton all my life. I have seen it grow in population but not so much in businesses. I would like to see the taxes go DOWN. Property taxes are a terrible joke on us. Is that why we can't get businesses to come here? We need to make it attractive to come to Princeton. I love the Christmas decor and flower boxes, the blooming apple trees on main street. They take care of the streets pretty well. I like Princeton overall. Other than property taxes, it's a good place to live.						1	

I have lived in the city of Princeton for over 30 years and continue to be very disappointed in the lack of new businesses. I don't know if it is due to the HIGH Mille Lacs taxes or the lack of incentives offered by the city but very unfortunate that almost every new business that comes to Princeton locate on the Sherburne County side of Princeton.

1

I wish there was a target, chipotle and other restaurants near the Walmart side of town. A minute clinic would be nice as the closest one is Cambridge. More summer kids activates or sports. I have 2 kids under 4 and not a lot of sports or activates are run that a working mom can get to. All ECFC classes are during the day. Swim lessons

1

I wish they could help out by Walmart and not have such HIGH property taxes so lots would sell and develop out there!

1

I would love to see Princeton do more to encourage more retail shopping & food in the downtown area. There are too many businesses in downtown that don't pull in retail customers which makes it hard for the others to survive. Princeton use to have a wonderful thriving downtown but not so much anymore.

1

Love this community and would be very happy to see new and existing businesses thrive here!

1

More chain restaurants and stores!!
Enough pizza and grocery already.

1

More restaurant selection would be great! Especially something along the lines of a Panera or Firehouse/Jersey Mikes. Better grocery options would also be nice. I love Coburns, but would like to see Walmart replaced/competing with something like a Target or Hyvee

1

More variety of new restaurants

1

Need MORE Big Name Restaurants- Olive Garden, Applebee's, TGI Fri's, or others		1	
Need more businesses in town and more commercial building sites.	1		
need more of a draw for Princeton residents, better, upscaled business, restaurants-there will be a huge change in the coming years to the highway portal going north, this town needs to get updated!!		1	
Panera bread		1	
Please invest in downtown Princeton to make it appealing to both residents and potential businesses.		1	
Princeton bulletin board and facebook pages alike are so negative and such a distasteful representation of our town. Born and raised in Princeton, itâ€™s disappointing. Our community should be represented in a more positive manner & encouraged to come together not argue over our small businesses and restaurants.	1		
Princeton is a great community with many things to offer. We need to work on re-energizing the downtown retail community and how to draw customers downtown.		1	
TacoBell...Culvers...Menards...FleetFarm...		1	
The downtown needs a 'facelift' The north end of town is pretty neglected. No sidewalks .roads are all patchey. Some due to the county but still in your city and seams like all the businesses are moving to Sherburne County side so maybe you should look into why that is. Thank you that is all for now.	1		1
There is no where to shop or eat in Princeton! We need more big box stores for shopping and better restaurants that are not fast food!		1	

This is a community with virtually little for job opportunities, waning tax base and very little draw for ANY economic activity - it is a bedroom community with little future growth potential, today!						1
We need better food options.	1					
We NEED more places to eat that's not pizza or burger joints. We lose money as a community because people have to travel to eat. Since they're already eating some where else they spend their money shopping near where they eat. We NEED kid friendly places. Bring a theater back, maybe a grand slam, arcades? We are surrounded by growing communities, we need to grow too		1				
We need more restaurants that stay open past 2pm						1
We need more retail!!			1			
we need more seat down restaurants and less gas stations			1			
We need restaurants & shopping for sure			1			
we only have the "same kind" of restaurants here. There isn't a nice place to go. We have far too many pizza shops and parts stores.			1			
Work at bringing retail and industry instead of taxing them so high that they stay away.						1
Would love to see more care put into the downtown area to make it more friendly for retail tenets to bring the city back to life, as well as more attention to our parks and recreation for our kids			1			
Would love to see more development of non-franchise restaurants and shops, and recreation for all ages.			1			
Tourism	2	6	3	3	3	

Add more recreational outdoor activity spots. I think this would increase the moral of town and help bring a little color to all of our lives. Most of the workforce is constantly working and doesn't have the time to go out of town for the weekend to relax and shut they're minds off. If there was a place in town (or near) that would resolve the issue.

1

Being able to get the community more activities that are age appropriate, (ie.. teens to small children) something productive to do would be beneficial for everyone and will help with more foot traffic

1

continue updating/improving park system

1

fix up More Parks

1

Fix up the parks especially Mark Park. I remember when that was a great park and a busy place especially duringvthe rum river festival. It is nowhere near the level now.

1

Go Tigers!

1

Grew up in Princeton. Needs to keep it's small town charms, mom & pop stores, good food while increasing outside traffic to sustain them. AFFORDABLE housing/rent opportunities for residential & business.

1

Improve dog park. Lighting, landscaping

1

Lifestyle tint brings in so much new traffic to Princeton. Theyâ€™re amazing at customer service and a true delight to have in Princeton

1

Lifestyle Tint Rules!

1

Parks and recreation, should be a high priority

1

Princeton has a few good restaurants but most lack quality food. Our sense of community would be better if we had more events to bring everyone together. Adults need to feel a sense of community to make the town better. It seems like most people have to leave town to eat or socialize which takes away from our local community. I suppose that is a drawback of a small town, we can only offer what people are willing to invest in town. More people who want to make Princeton "their" hometown will show up as they promote and invest here. We don't really have that sense of pride and ownership in Princeton. I'm not sure how you get it, I'm sure it takes money, patience and dedication. Also a willingness for companies/people to want to invest in town and make it their own.

1

Princeton needs to grow. We need more area.

1

Princeton needs walking trails, given the large amount of people who live outside of town Princeton needs walking/biking/running trails that are accessible by car or foot. More investment in small business, to fill the open spaces downtown. Allow for more restaurants, even if that means city ordinances need to change to allow for more liquor licenses.

1

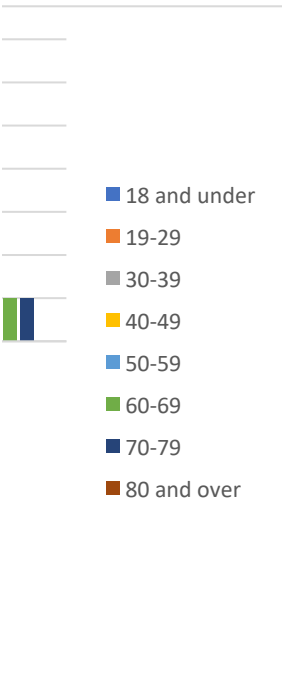
The city should invest more funds towards parks and trails. In order to attract younger families there needs to be more retail options and entertainment options. The brewery opening in the spring is going to be a great start to this.

1

**Grand
Total**

20
12
2
11
5
35
17
19

121



**Grand
Total**

20

1

1

1

1

1

1

1

1

1

1

1

1

1

1

1

1

1

1

1

1

12

1

1

1

1

1

1

1

1

1

1

1

1

2

1

1

11

1

1

1

1

1

1

1

1

1

1

1

5

1

1

1

1

1

35

1

1

1

1

1

1

1

1

1

1

1

1

1

1

1

1

1

1

1

1

1

1

1

1

1

1

1

1

1

1

1

1

1

1

1

17

1

1

1

1

1

1

1

1

1

1

1

1

1

1

1

1

1

19

1

13

1

1

1

1

1

121

Survey	What is your	What is	What is	What is	What is	What is	What is	What is	What is
1	Restaurants			Parks and					
1	Restaurants		Retail			Communi			
1	Restaurants	School	Retail	Parks and	Healthcar	Communi	Employment	Housing	Neighbor
1				Parks and		Communi	Employment	Housing	Neighbor
1						Communi	Employment		Neighbor
1	Restaurants			Parks and				Housing	Neighbor
1				Parks and				Housing	Neighbor
1	Restaurants	School							Neighbor
1	Restaurants	School		Parks and		Communi	Employment		Neighbor
1						Communi	Employment		
1	Restaurants		Retail	Parks and			Employment	Housing	Neighbor
1	Restaurants			Parks and		Communi		Housing	Neighbor
1	Restaurants			Parks and				Housing	
1	Restaurants	School				Communi		Housing	Neighbor
1		School				Communi			
1	Restaurants	School	Retail						
1	Restaurants					Communi			Neighbor
1						Communi			Neighbor
1	Restaurants	School		Parks and		Communi			Neighbor
1			Retail			Communi			
1			Retail			Communi		Housing	
1	Restaurants		Retail					Housing	Neighbor
1	Restaurants							Housing	
1	Restaurants			Parks and		Communi			
1	Restaurants					Communi			Neighbor
1	Restaurants					Communi			Neighbor
1	Restaurants			Parks and		Communi			Neighbor
1	Restaurants			Parks and		Communi			
1	Restaurants		Retail	Parks and		Communi			Neighbor
1		School		Parks and			Employment		Neighbor
1	Restaurants					Communi	Employment	Housing	Neighbor
1				Parks and					
1	Restaurants	School	Retail	Parks and	Healthcar	Communi	Employment	Housing	Neighbor
1	Restaurants	School	Retail	Parks and					

What is	How do	How do	Which of	Which of	Which of	Which of	Which of	Which of	Which of
	I live								
Don't	I live			Manu	Retail,				
	I live					Transport			
Nothing	I live			Manu	Retail,				
Friendly	I live		Tourism				Housing		
	I live						Housing		
	I live			Manu					
	I live				Retail,				Age
	I live				Retail,				Age
	I work for		Tourism						Age
	I live				Retail,				
	I live				Retail,				
	I live						Housing		
	I live						Housing		Age
	I live		Tourism	Manu					Age
	I live		Tourism						
	I live			Manu	Retail,				
	I live			Manu	Retail,			Housing	
	I live				Retail,				
	I live		Tourism		Retail,			Housing	
	I live						Housing		Age
	I live						Housing		Age
	I live		Tourism		Retail,				
	I live			Manu					Age
	I live			Manu	Retail,			Housing	
	I live			Manu	Retail,			Housing	
	I live				Retail,				
	I live			Manu	Retail,			Housing	
Other		Sherburt		Manu	Retail,			Housing	
	I live				Retail,				Age
	I live				Retail,			Housing	Age
Church	I live		Tourism	Manu				Housing	
	I live				Retail,			Housing	Age
No	I live		Tourism	Manu	Retail,				
	I live			Manu	Retail,			Housing	
	I live				Retail,				Age
	I live							Housing	
	I live			Manu					
	I live			Manu	Retail,			Housing	
	I live				Retail,			Housing	Age
	I live							Housing	Age
	I live		Tourism		Retail,				Age
	I live			Manu	Retail,				Age
	I work for				Retail,			Housing	Age
	I live		Tourism		Retail,			Housing	
	I live				Retail,				
	I live								Age
	I live		Tourism		Retail,			Housing	
	I am a			Manu	Retail,			Housing	

What is	Comment
30-39	
80 and	FAVORITE
70-79	Fix the
70-79	For
60-69	Housing
70-79	Housing
60-69	I like
50-59	We need
19-29	We really
50-59	
50-59	
80 and	
80 and	
80 and	
Under 18	
Under 18	
19-29	
60-69	
70-79	
60-69	
60-69	
80 and	
70-79	
60-69	
80 and	
80 and	
70-79	
70-79	
80 and	
80 and	
70-79	
70-79	
80 and	
80 and	
80 and	
80 and	
80 and	
70-79	
80 and	
80 and	
70-79	
80 and	
70-79	
80 and	
Under 18	
19-29	
19-29	
Under 18	
30-39	
30-39	
60-69	
50-59	

Dropdown

Other

Tourism

Manufacturing and Industrial

Retail, Restaurants and Service Industries

Transportation

Housing

Age Friendly

Private and Public Sector Relations